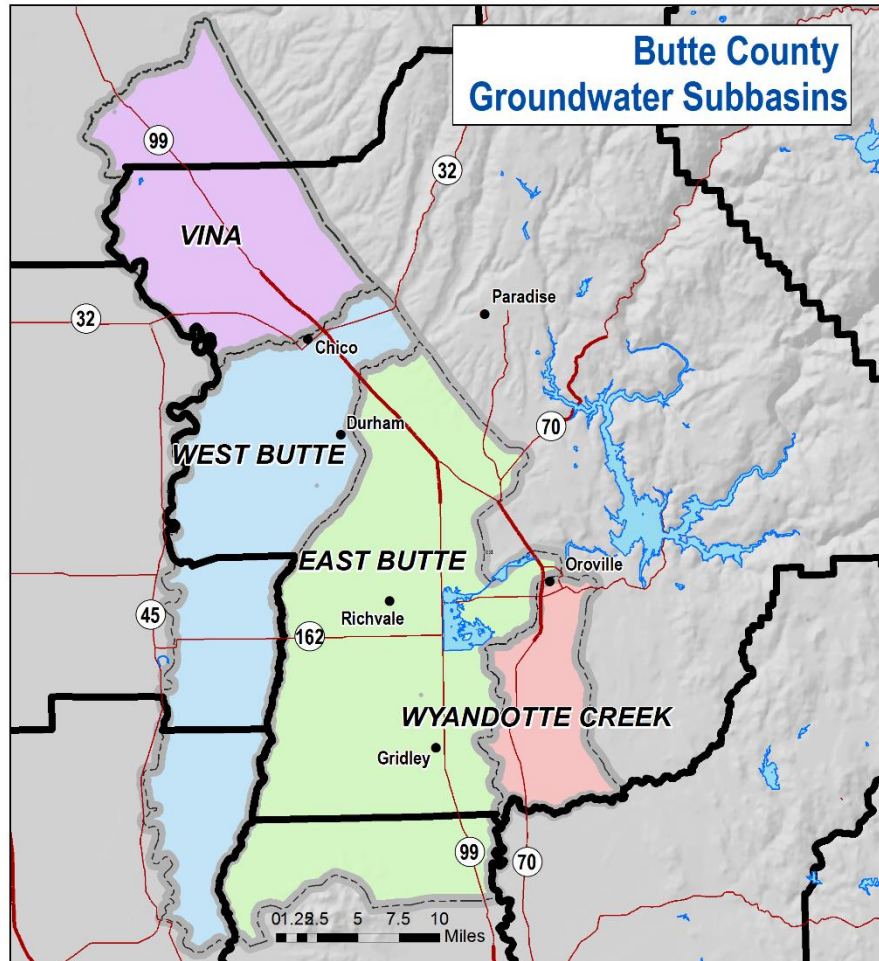


Introduction to Program

Vickie Newlin, Assistant Director
Butte County Water and Resource Conservation


Sustainable Groundwater Management Act (SGMA) Sub Basins Within Butte County


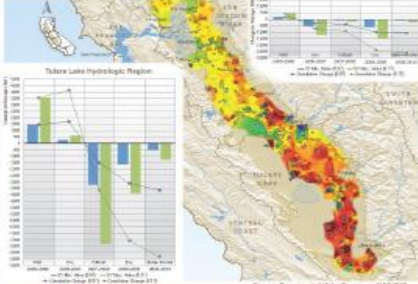
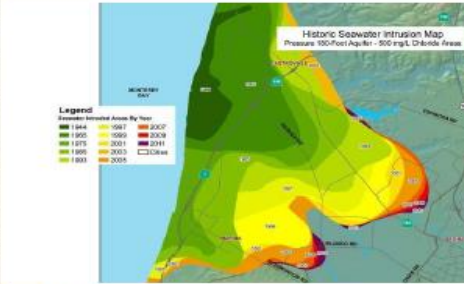



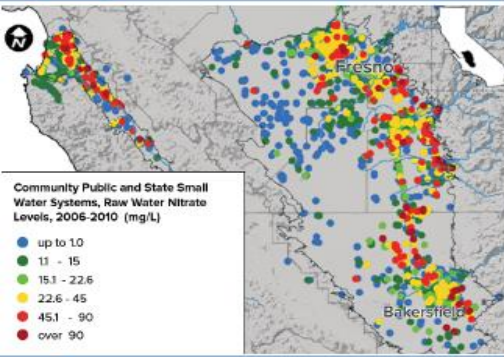





► Insert b



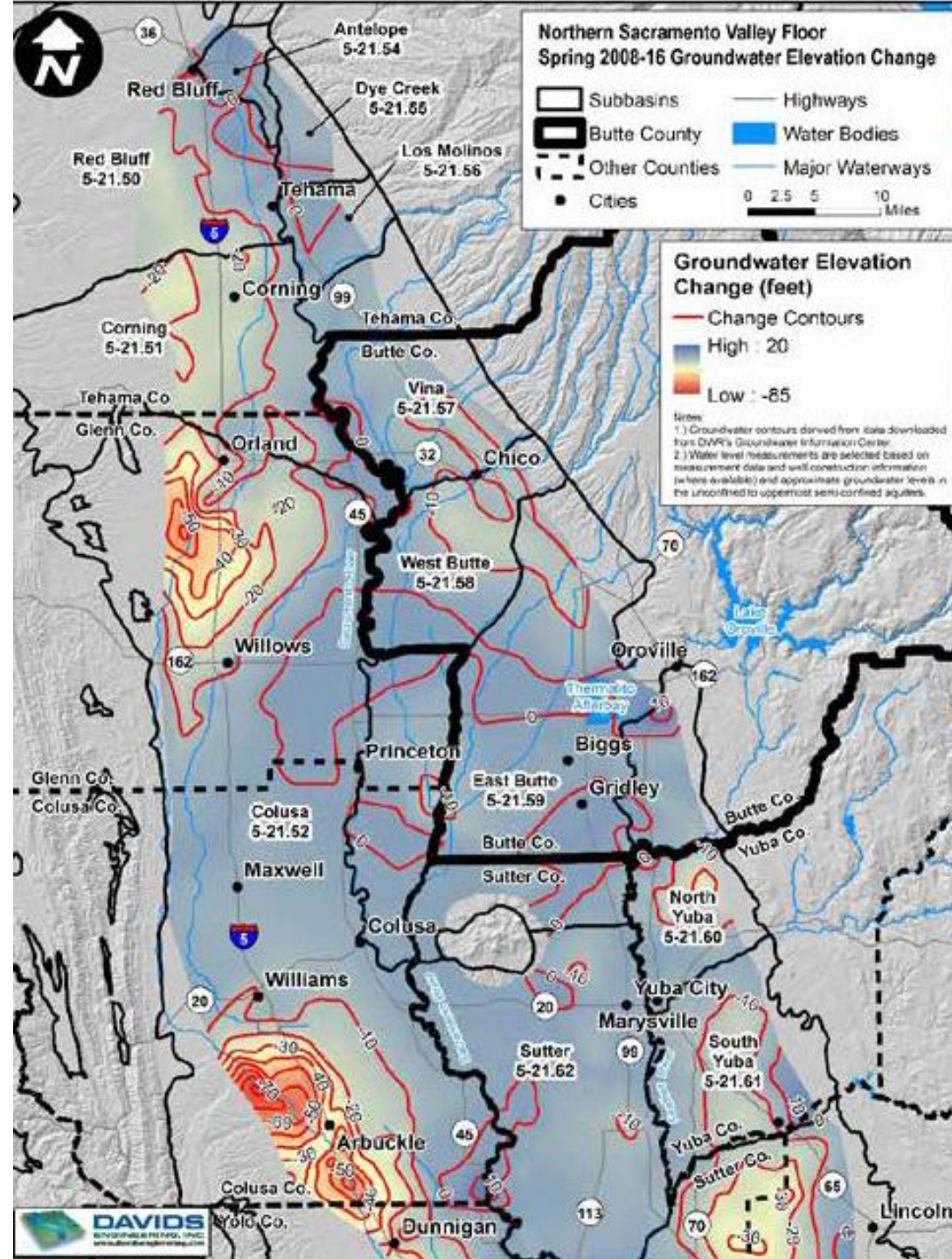
Undesirable Results to Avoid for Groundwater Sustainability

Undesirable Results



		
 <p>Lowering of GW Levels</p>	 <p>Reduction of GW Storage</p>	 <p>Seawater Intrusion</p>
 <p>Community Public and State Small Water Systems, Raw Water Nitrate Levels, 2006-2010 (mg/L)</p> <ul style="list-style-type: none"> ● up to 10 ● 11 - 15 ● 15.1 - 22.6 ● 22.6 - 45 ● 45.1 - 90 ● over 90 		
 <p>Water Quality Degradation</p>	 <p>Land Subsidence</p>	 <p>Depletion of Interconnected Streams</p>

Risk Analysis of Undesirable Results David's Engineering



Prop 1
COUNTIES WITH STRESSED BASINS GRANT

**Administered through the
Department of Water Resources**

Sustainable Groundwater Planning Grant Program pursuant to the Water Quality, Supply, and Infrastructure Improvement Act of 2014 (Proposition 1) (Water Code Section 79700 *et seq.*) provides financial resources to advance sustainable groundwater management

Tasks Included in Grant Application:

- ▶ Grant Administration
- ▶ Development of Recharge Map
- ▶ Site Prioritization and Rating of Recharge Areas
- ▶ Economic Evaluation and Cost/Benefit Analysis of Dual Irrigation System for In-lieu Recharge Benefits
- ▶ Public Outreach and Education

Today's Program

- ▶ **Current Conceptual Model of Recharge in the Butte Basin - Christina Buck, Water Resources Scientist, Butte County Water and Resource Conservation**
- ▶ **Presentation of Recharge Constraints Mapping - Mark Williamson, GEI Consulting**
- ▶ **Cost/Benefit Evaluation of Dual Irrigation Systems - Byron Clark, Davids Engineering**
- ▶ **Public Discussion**

Questions?

vnewlin@buttecounty.net

pgosselin@buttecounty.net

cbuck@buttecounty.net