

BUTTE COUNTY SHERIFF'S OFFICE MEDIA RELEASE

**JERRY W. SMITH
SHERIFF-CORONER**



DATE : 07-14-2011
RELEASED BY : Sgt Marty Rolph
CONTACT # : 538-7389

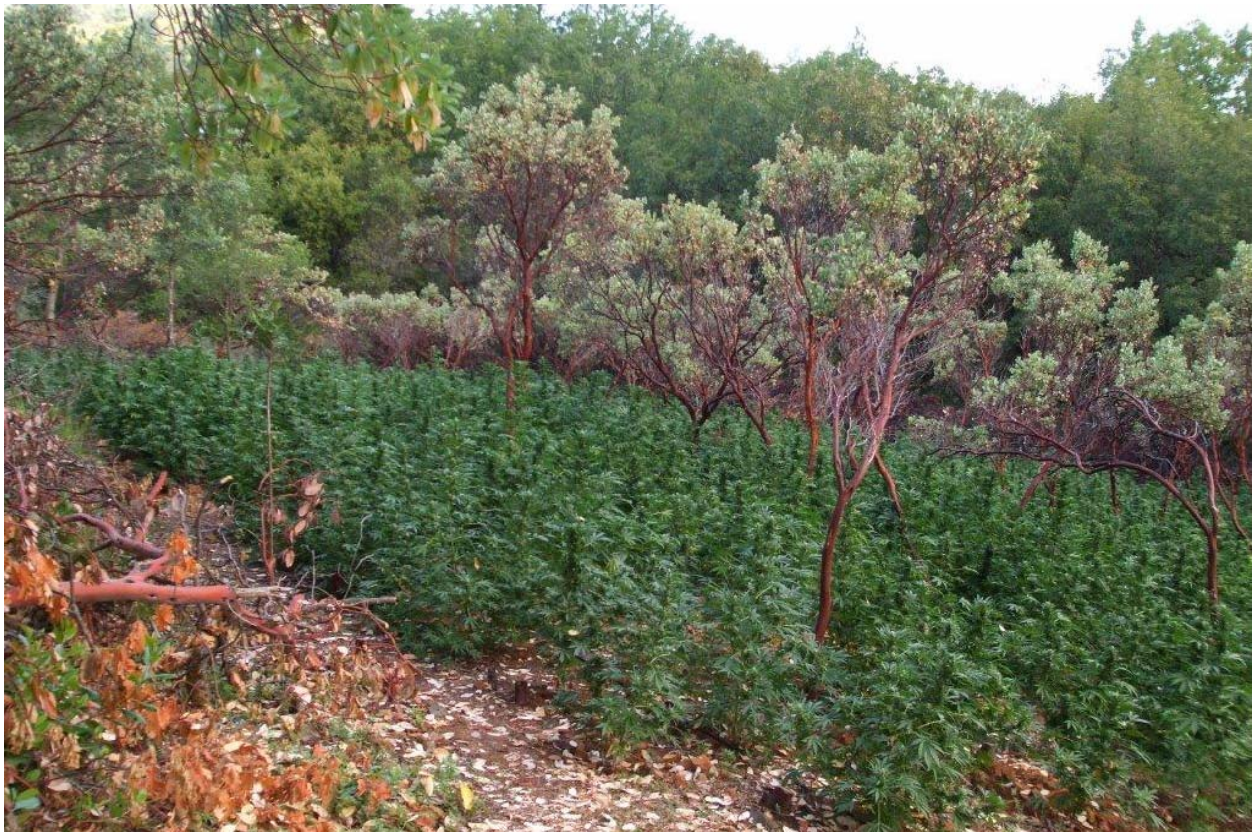
On July 7, 2011 the Butte County Sheriff's Office Special Enforcement Unit conducted an early morning raid of a marijuana garden in the Forbestown area. During the raid investigators encountered three suspects as they entered their kitchen area. The Detectives were able to apprehend a Marcos Colima-Monge, 62, originally from Michoacán Mexico, however the other two suspects were able to escape. The Special Enforcement Unit eradicated 4247 growing marijuana plants from the site.

On this same date the Butte County Sheriff's Office Special Enforcement Unit raided another illicit marijuana grow a quarter mile from the first site. The Detectives searched the site for suspects however none were found. A total of 6171 marijuana plants in varying stages of growth were eradicated from this site.

The Special Enforcement Unit would like to remind people to be cautious when entering our National Forests and foothill area. If you find a marijuana garden in a remote wilderness area, it is recommended that you immediately leave the area and contact the Special Enforcement Unit.



33 COUNTY CENTER DRIVE, OROVILLE, CA 95965, 530-538-7671



33 COUNTY CENTER DRIVE, OROVILLE, CA 95965, 530-538-7671