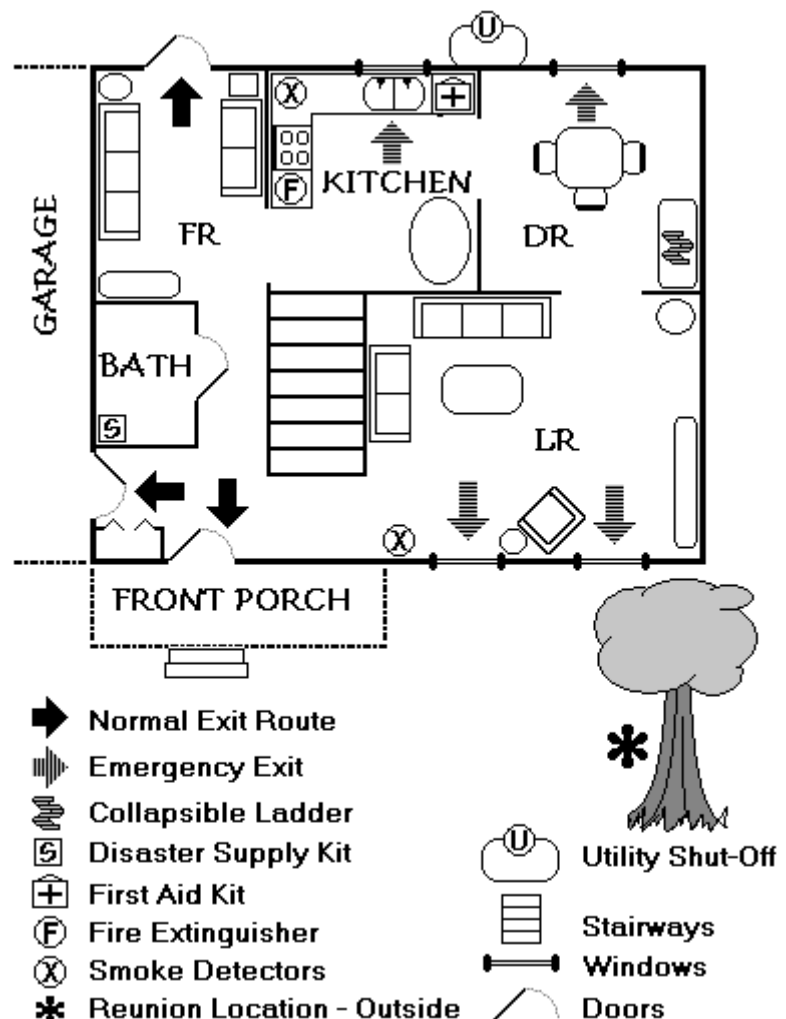


# April: Emergency Evacuation Plan

**TASK:** Create an Emergency Evacuation Plan.

An emergency evacuation plan is useful not only for disasters, but also for fires or other incidents in your home. When creating an evacuation plan for your home it is important to remember the following:

- Identify two escape routes from each room.
- Identify the location of any throw ladder, or other special equipment.
- Identify the location of fire extinguishers, smoke detectors, first aid kits, disaster 72-hour kit.
- Identify the locations of the shutoff for gas, water, and electricity.
- Draw your floor plan, then draw your evacuation routes and a meeting place.
- If you live in a two-story home, make one drawing for each story.
- Identify outside hazards (fences, trees, power lines, etc...)



# **Our Emergency Evacuation Plan**