

An aerial photograph of a winding river or canal system cutting through a patchwork of green and brown agricultural fields. The water is a deep blue, and the surrounding land is divided into various sized plots, some with visible furrows and others with dense vegetation. The overall scene is a rural landscape with a prominent waterway.

Bay Delta Conservation Plan (BDCP)

presentation for
Northern Sacramento Valley Water Forum
11/16/2010
by
Russ Stein
Department of Water Resources

Overview

- Why BDCP
- Who is involved in BDCP
- What's in BDCP
- Uncertainty in BDCP
- When BDCP

Why BDCP

Bay Delta Conservation Plan

- Discussions began in late 2005 - Initiated in 2006
- SWP/CVP Delta permitting complexity
- dual goals of more reliable water supply and restored Delta ecosystem
 - Habitat Conservation Plan (HCP Section 10)
 - Natural Community Conservation Plan (NCCP)
 - Multi-species and longer term permits

Who is involved in BDCP

Parties and Roles

- BDCP Steering Committee
- Regulatory/Approving Agencies
- CEQA and NEPA lead agencies
- Cooperating Agencies
- Other Interests

What's in the BDCP

BDCP Goals

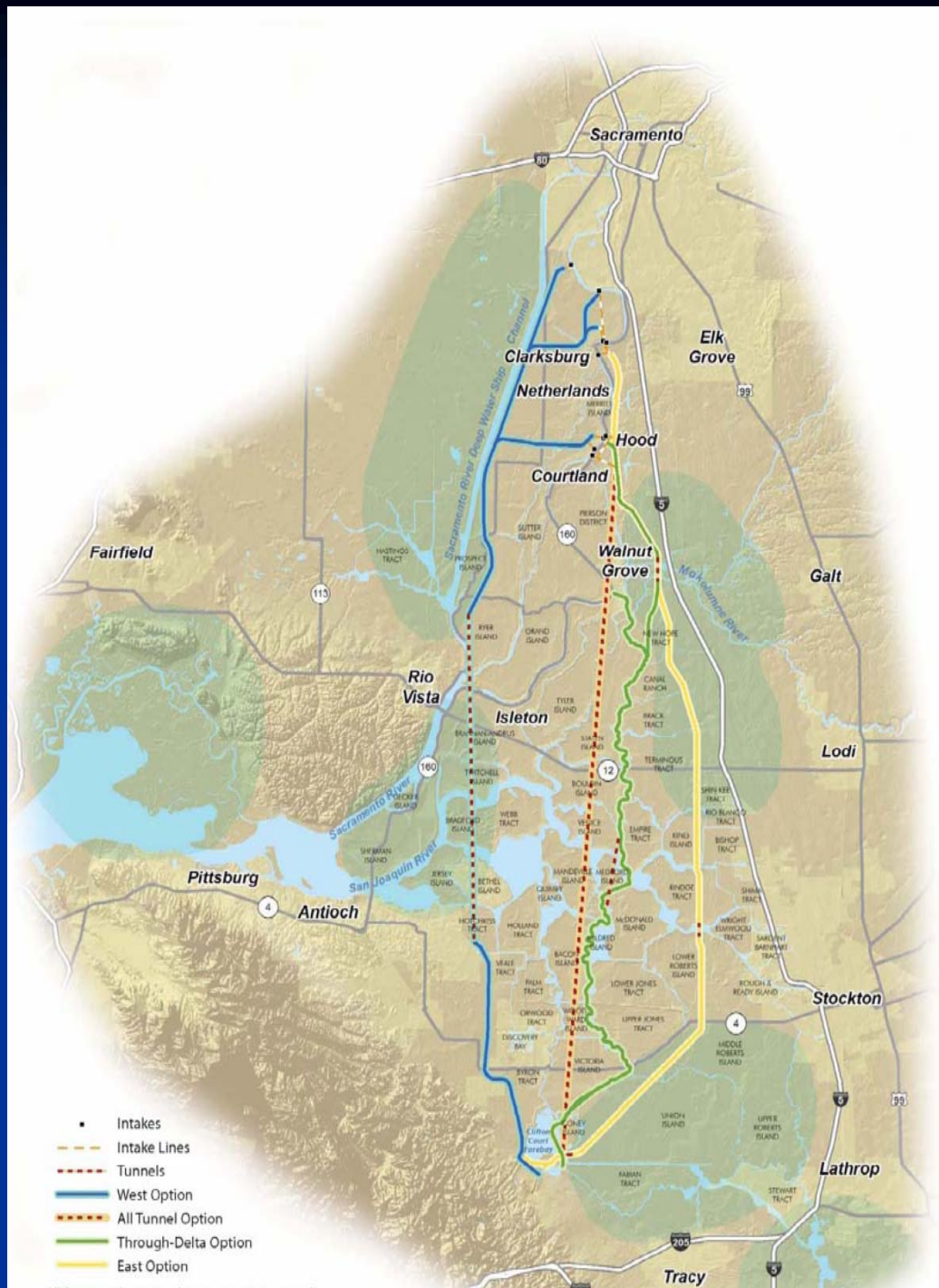
2006 Planning Agreement

- **Preserve, restore and enhance** aquatic, riparian and associated terrestrial natural **communities and ecosystems** that support Covered Species within the Planning Area through conservation partnerships
- **Allow for projects to proceed that restore and protect water supply, water quality and ecosystem health** within a stable regulatory framework

Conservation Strategy

- Conveyance/Operations
- Habitat Restoration
 - Tidal Marsh
 - Floodplain Inundation
 - Channel Margin Habitat
- Other Stressors

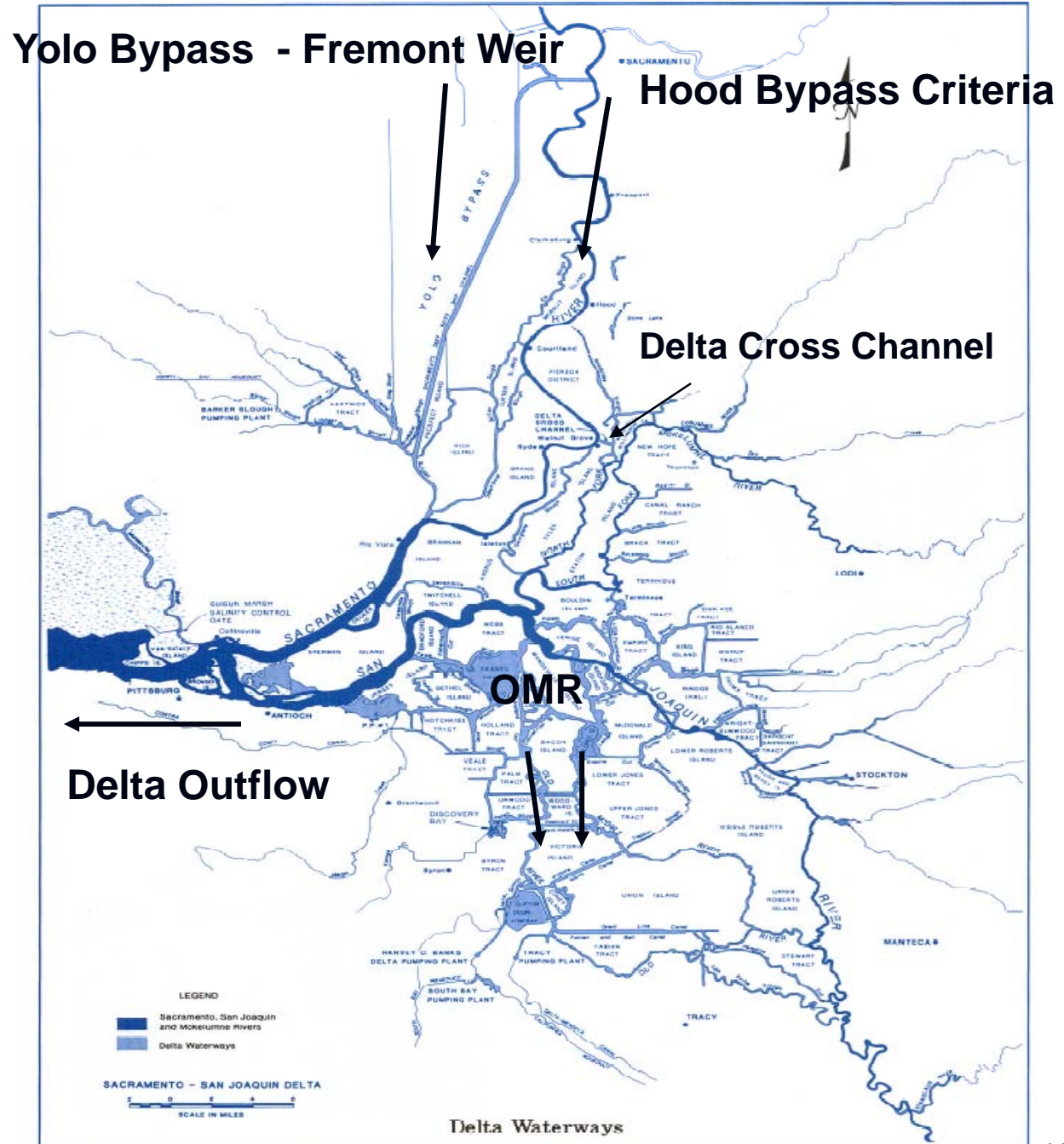
Water Conveyance Alternatives



- Intakes
- - - Intake Lines
- - - Tunnels
- West Option
- - - All Tunnel Option
- Through-Delta Option
- East Option

BDCP Key Operational Factors

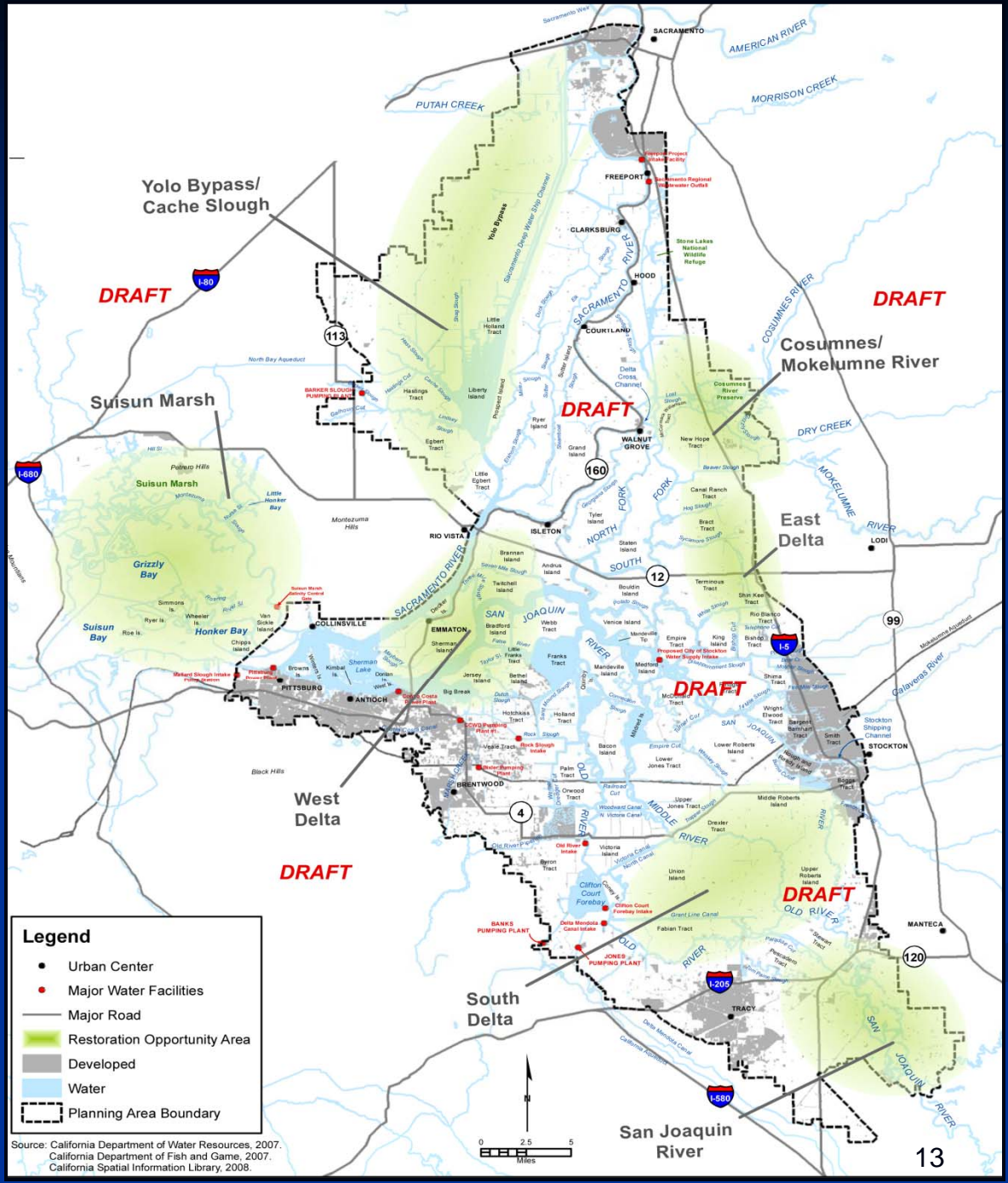
- Hood Bypass
- OMR Flows
- Delta Outflow
- Fremont Weir
- State and federal Water Rights



Operations

- Flow Criteria Reports
 - Highlights need for integrated solution
 - Implement non flow measures
 - Adaptive decision making
- Integrating Flow Criteria Reports
 - Consider criteria to assess risk to BDCP
 - Develop packages of Conservation Measures
 - Considering range of operations
 - Develop a science program
 - Evaluate in the EIR/S

Habitat Restoration Areas



Habitat Restoration Conservation Measures

BDCP Steering Committee Handout - March 25, 2010

- Tidal Habitat Restoration
 - Restore up to 65,000 acres of freshwater and brackish tidal habitat
- Channel Margin Habitat Enhancement
 - Enhance 20-to-40 linear miles in the Delta
- Riparian Habitat Restoration
 - Restore at least 5,000 acres of riparian forest and scrub
- Seasonally Inundated Floodplain Restoration
 - Restore at least 10,000 acres of seasonally inundated floodplain
- Fremont Weir/Yolo Bypass Habitat Improvements
 - Modify Fremont Weir to provide fish passage
 - Provide for more frequent and longer inundations of Yolo Bypass

Other Stressors Conservation Measures

BDCP Steering Committee Handout - March 25, 2010

- Help maintain Stockton Deep Water Ship Channel dissolved oxygen levels above levels that impair covered fish species
- Reduce illegal harvest of salmonids and sturgeon
- Develop Hatchery and Genetic Management Plans
- Develop Conservation Hatcheries for delta and longfin smelt
- Implement predator control
- Develop and implement non-physical fish barriers
- Minimize methylation of inorganic mercury in BDCP habitat restoration areas caused by BDCP restoration actions
- Implement non-native aquatic vegetation control

Covered Activities and Associated Federal Actions

- Operations and maintenance of existing State Water Project and Federal Central Valley Project facilities
- Power generation water use
- New water facilities construction, operations, and maintenance
- Habitat restoration, enhancement, and management actions
- Activities to reduce contaminants
- Monitoring and research programs
- Other conservations measures
- Emergency actions

Uncertainty in BDCP

Uncertainty

- Climate Change/Sea Level Rise
- Levee Failures
- Invasive Species
- Effectiveness of Conservation Measures

Management of Uncertainty

- Initial Strategy Needs to be Action Based With Strong Monitoring Component
- Adaptive Management
- Longer Term Strategy Needs to be Outcome Based with Integrated Adaptive Management

When BDCP

Process for Completing – Timeline

- Draft BDCP status document in late 2010
- Public Review Drafts 2011
 - Draft BDCP
 - Draft EIR/EIS
- Biological Assessment and Biological Opinion in 2012
- Final EIR/EIS, Permit Issuance in 2012
- Begin Implementation in 2012