

PLOT DATE: 3/27/08

# PLANS FOR THE CONSTRUCTION OF DURHAM - PENTZ ROAD & BUTTE CAMPUS DRIVE SIGNALIZATION SIGNAL DETAILS SHEET

SERVICE EQUIPMENT SCHEDULE		
SERVICE NUMBER	120/240	
VOLTAGE	M + TDU	
METERING	M + TDU	
SERVICE TYPE	III-AF	
WIRING DIAGRAM	AS SHOWN	
MAIN BREAKER	100A - 3P	
SUB (LIGHTING)	30A - 2P	
SUB (SIGNALS)	50A - 1P	
SUB (ISNS)	15A - 1P	
LIGHTING CONTACTOR	30A - 2P	
SUB FLASHER	15A - 1P	
CONTACTOR COIL	120V	
SEE STANDARD PLANS:	ES-2A, ES-2C, ES-2D,	
M = METERED	TOU = TIME OF USE	
U = UNMETERED		

**NOTES:**

CONSTRUCT FOUNDATION FOR TYPE 170 CONTROLLER (SEE STANDARD PLAN ES-3C). INSTALL CONTROLLER AND CONNECT FIELD WIRING AS DIRECTED BY THE ENGINEER.

THE EXISTENCE AND LOCATION OF ALL UTILITIES SHALL BE VERIFIED BY THE CONTRACTOR.

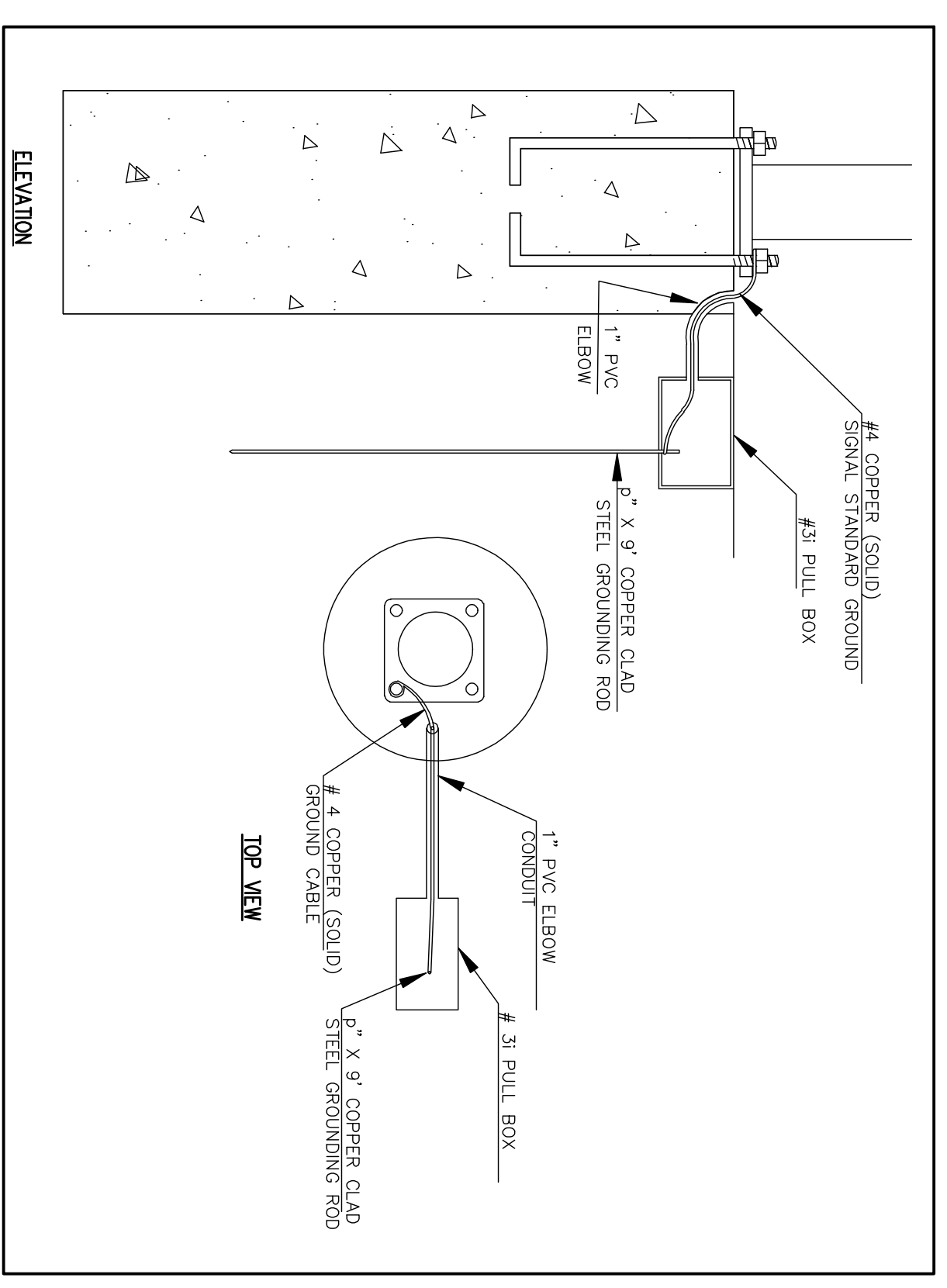
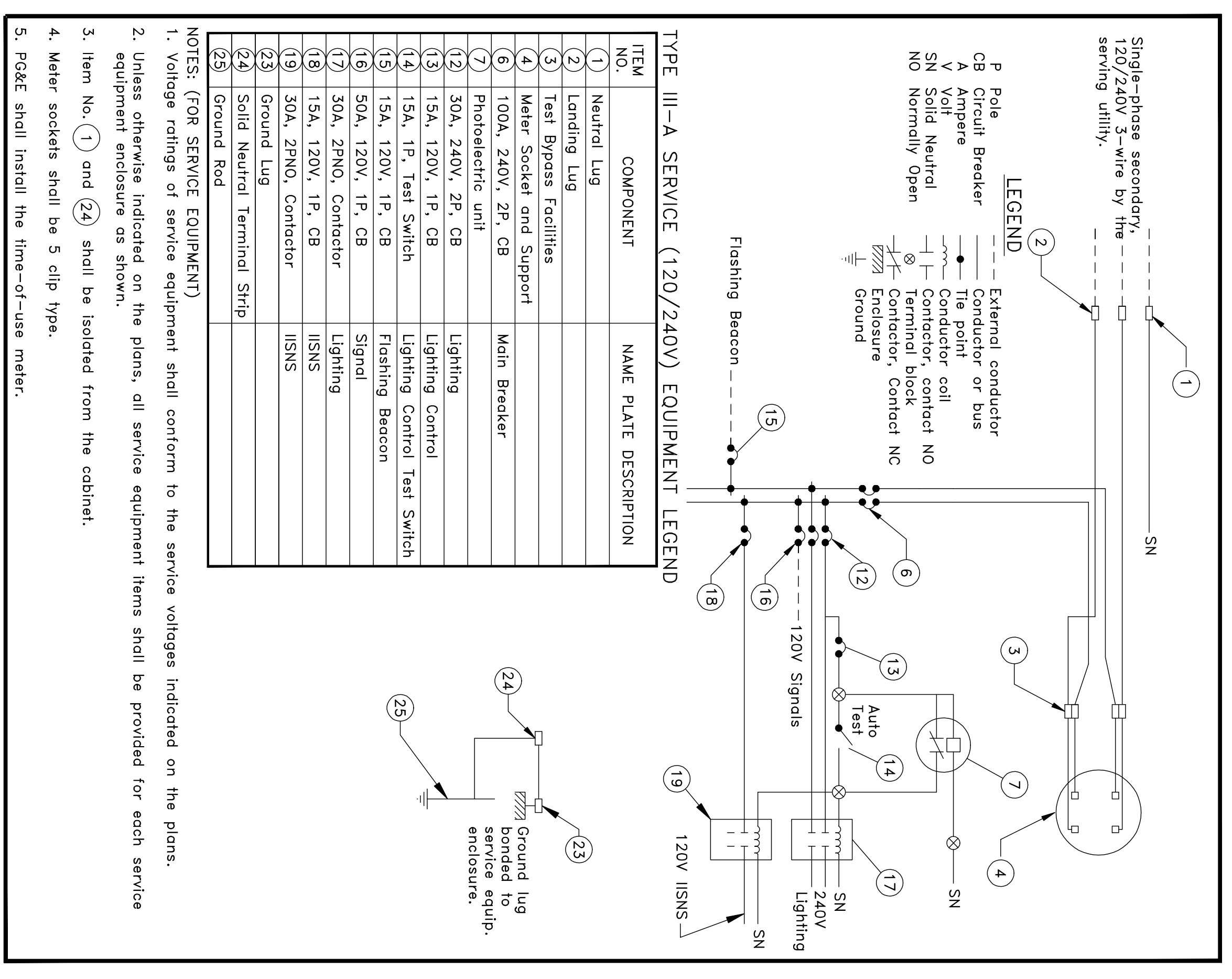
FOR LEGEND SEE STANDARD PLAN SHEETS ES-1A, 1B.

SIGNAL POLE FOUNDATIONS SHALL BE ADJUSTED TO BYPASS ANY UNDERGROUND UTILITY CONFLICT AS DIRECTED BY THE ENGINEER.

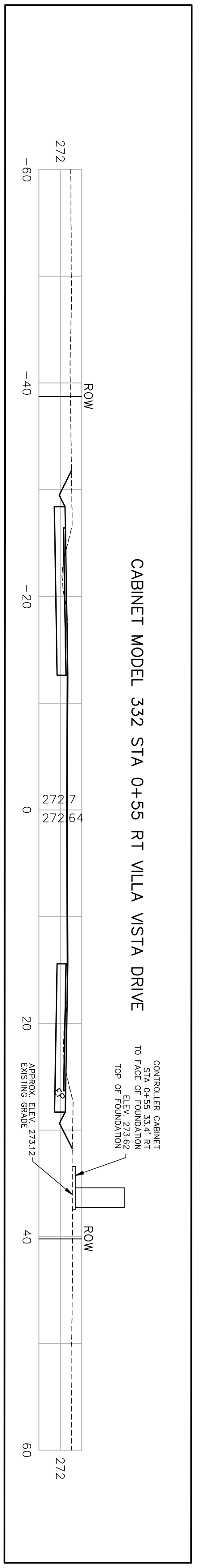
6'x6' LOOPS AND TYPE "C" DETECTORS SHALL BE CENTERED IN THE LANE UNLESS OTHERWISE NOTED.

D.L.C. = DETECTOR LEAD-IN CABLE

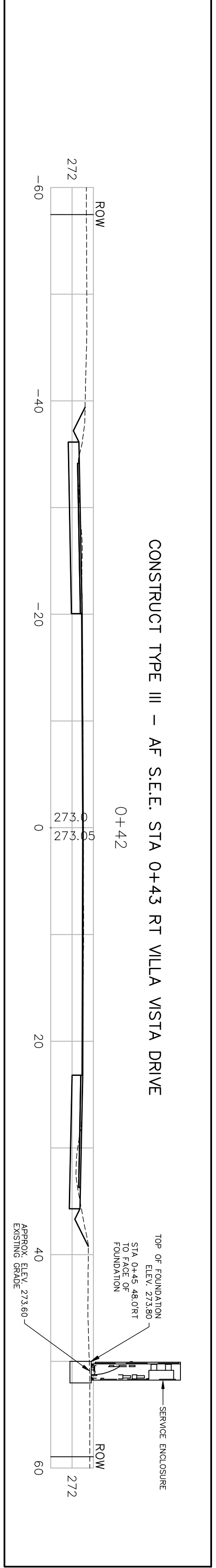
CONTRACTOR SHALL PROVIDE HARDWARE TO INSTALL SIGNS ON SIGNAL MAST-ARM PER ES-7N



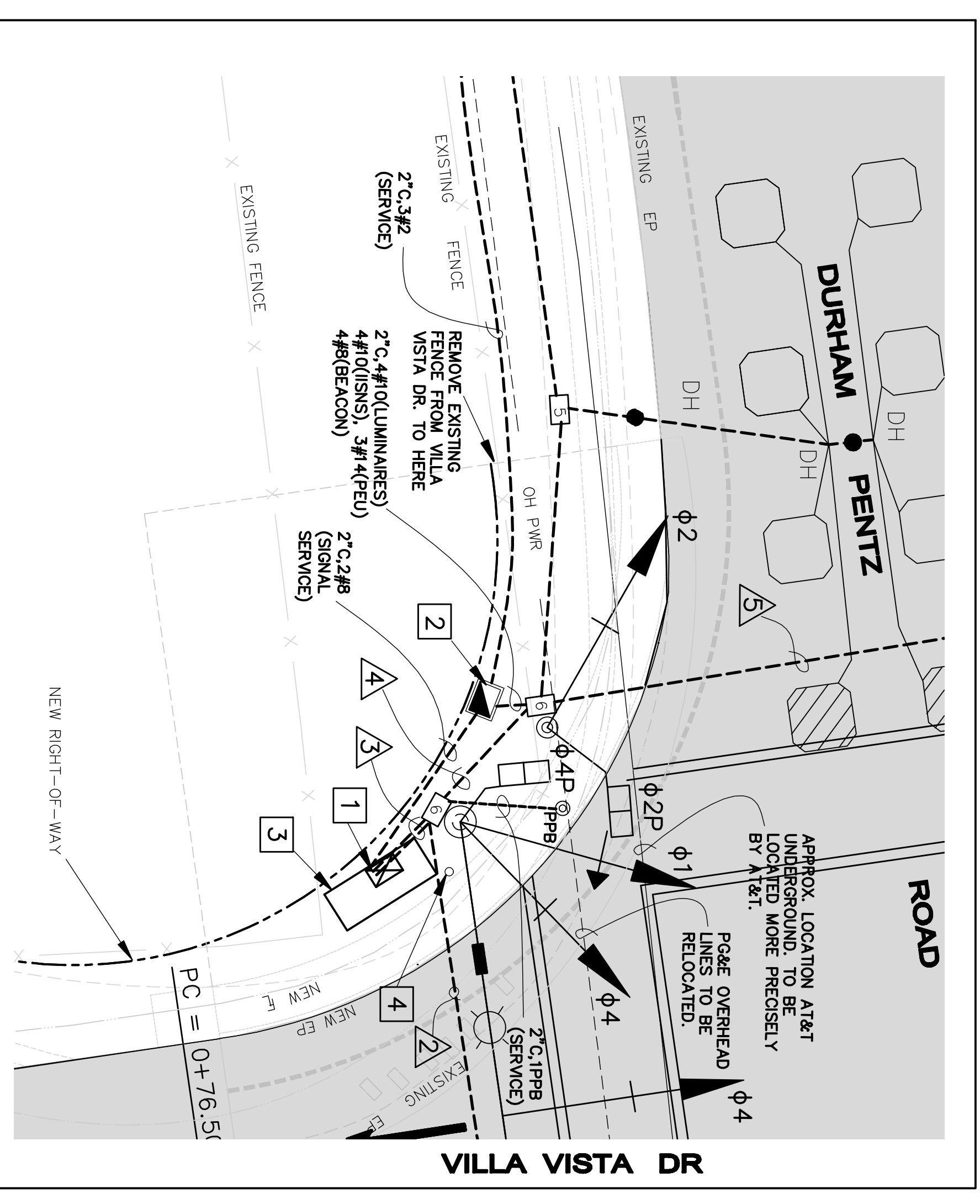
## B 120/240 SERVICE WIRING DIAGRAM



## D CONTROLLER CABINET CROSS-SECTION



## E SERVICE CABINET CROSS-SECTION



## F CONTROLLER & SERVICE DETAIL

- MODEL 170 CONTROLLER IN MODEL 332 CABINET.
- TYPE III-AF SERVICE EQUIPMENT ENCLOSURE
- FOUNDATION PER CAL-TRANS STD PLAN ES-3C.
- GUARD POST PER CAL-TRANS STD PLAN ES-7P.