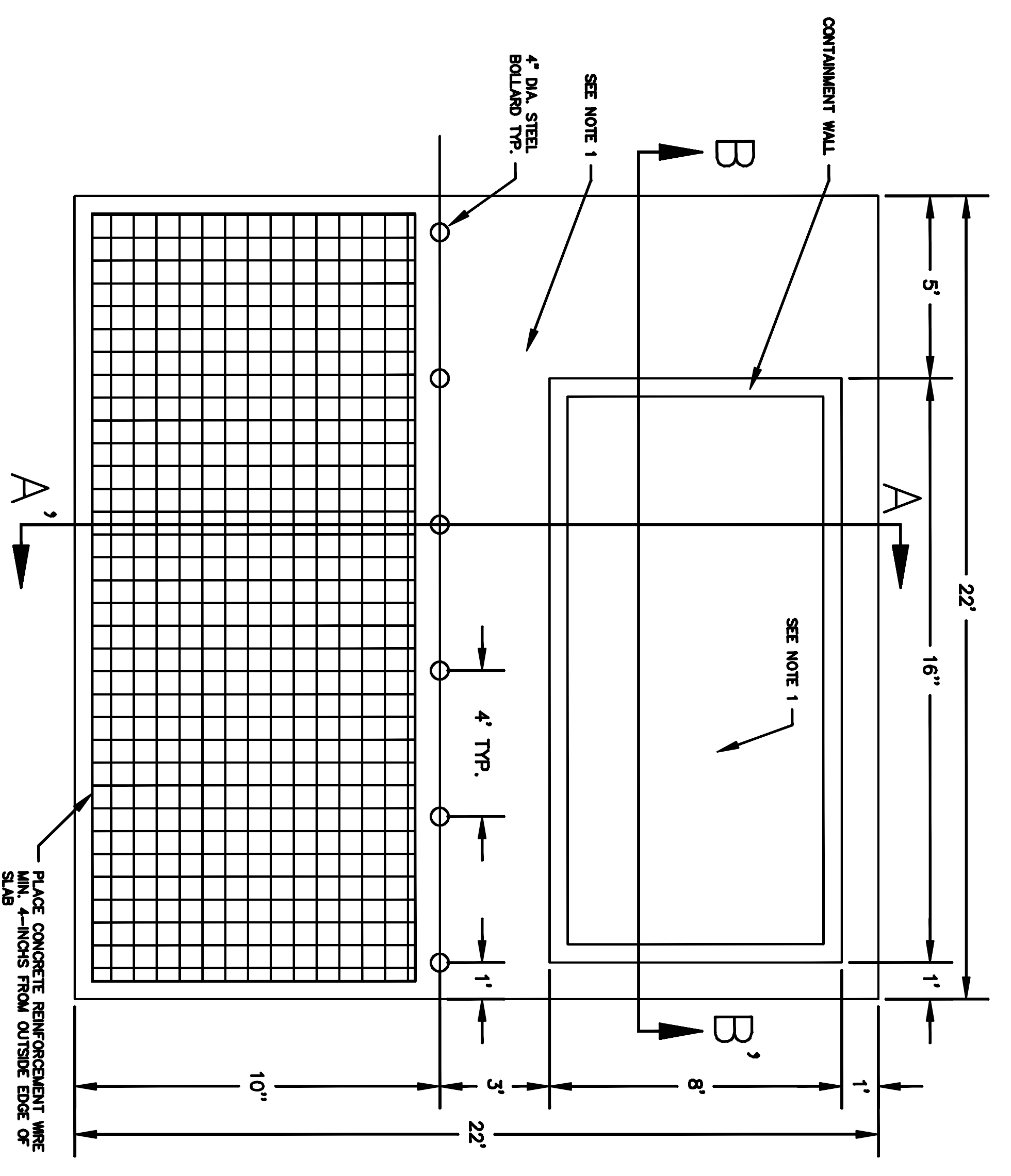
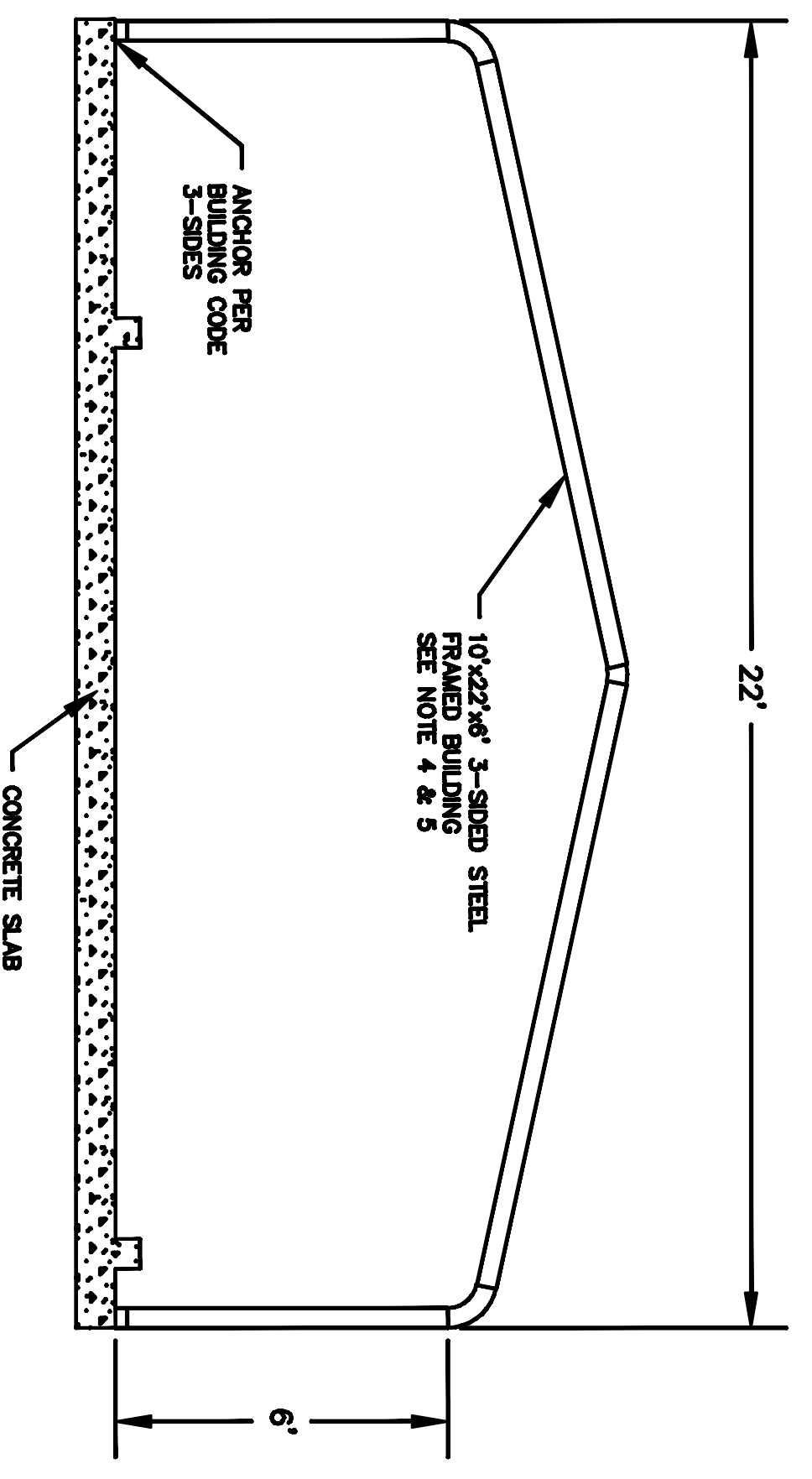


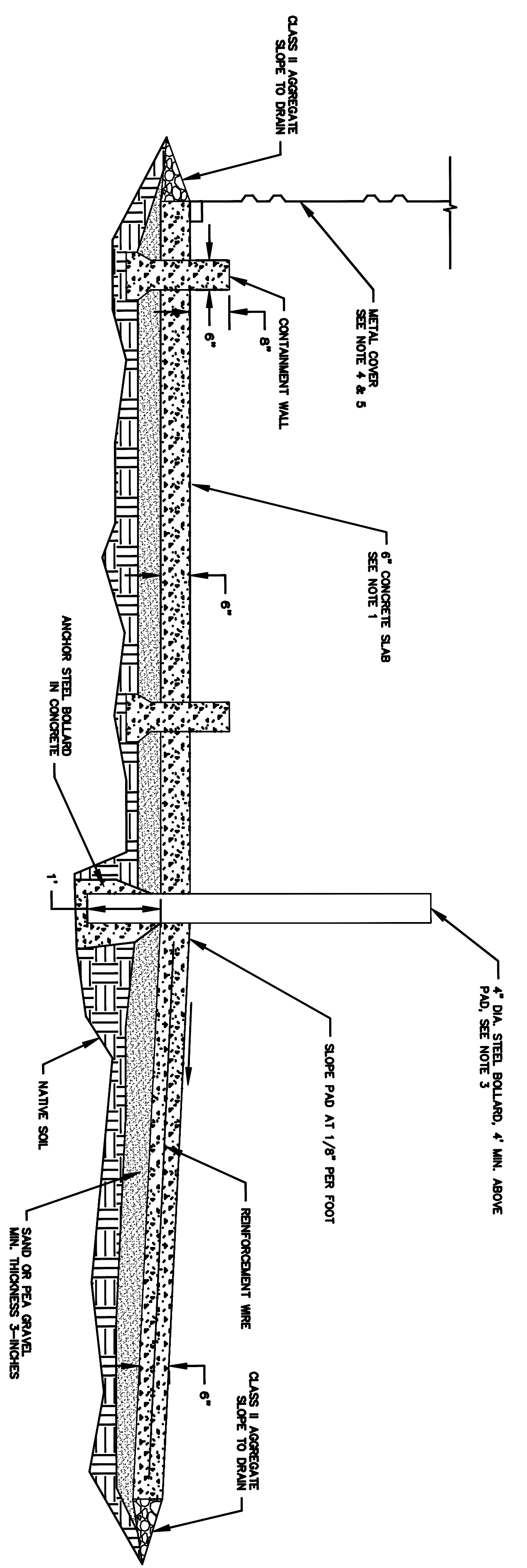
PLANS FOR THE CONSTRUCTION OF
OIL DROP OFF FACILITY



PLAN VIEW - CONCRETE SLAB
 NTS



SECTION B-B' METAL COVER - ELEVATION VIEW
 NTS



SECTION A-A' CONCRETE SLAB
 NTS

- NOTES:**
1. SURFACE FINISH INSIDE CONTAINMENT WALL SHALL BE SMOOTH, SURFACE FINISH ALL OTHER AREAS SHALL BE LIGHT BROOK.
 2. ROUND ALL CONCRETE EDGES.
 3. STEEL BOLLARDS SHALL BE FILLED WITH CONCRETE, CAPPED W/PVC CAP AND PAINTED BRIGHT YELLOW.
 4. STEEL FRAME WORK SHALL BE 14-GAUGE GALVANIZED STEEL, CORRUGATED METAL SHEET SHALL BE 24 GAUGE STEEL, STRUCTURE SHALL COMPLY WITH ALL APPLICABLE BUILDING CODES.
 5. CORRUGATED SHEET STEEL SHALL BE PAINTED WHITE OR TAN INTERIOR AND EXTERIOR.