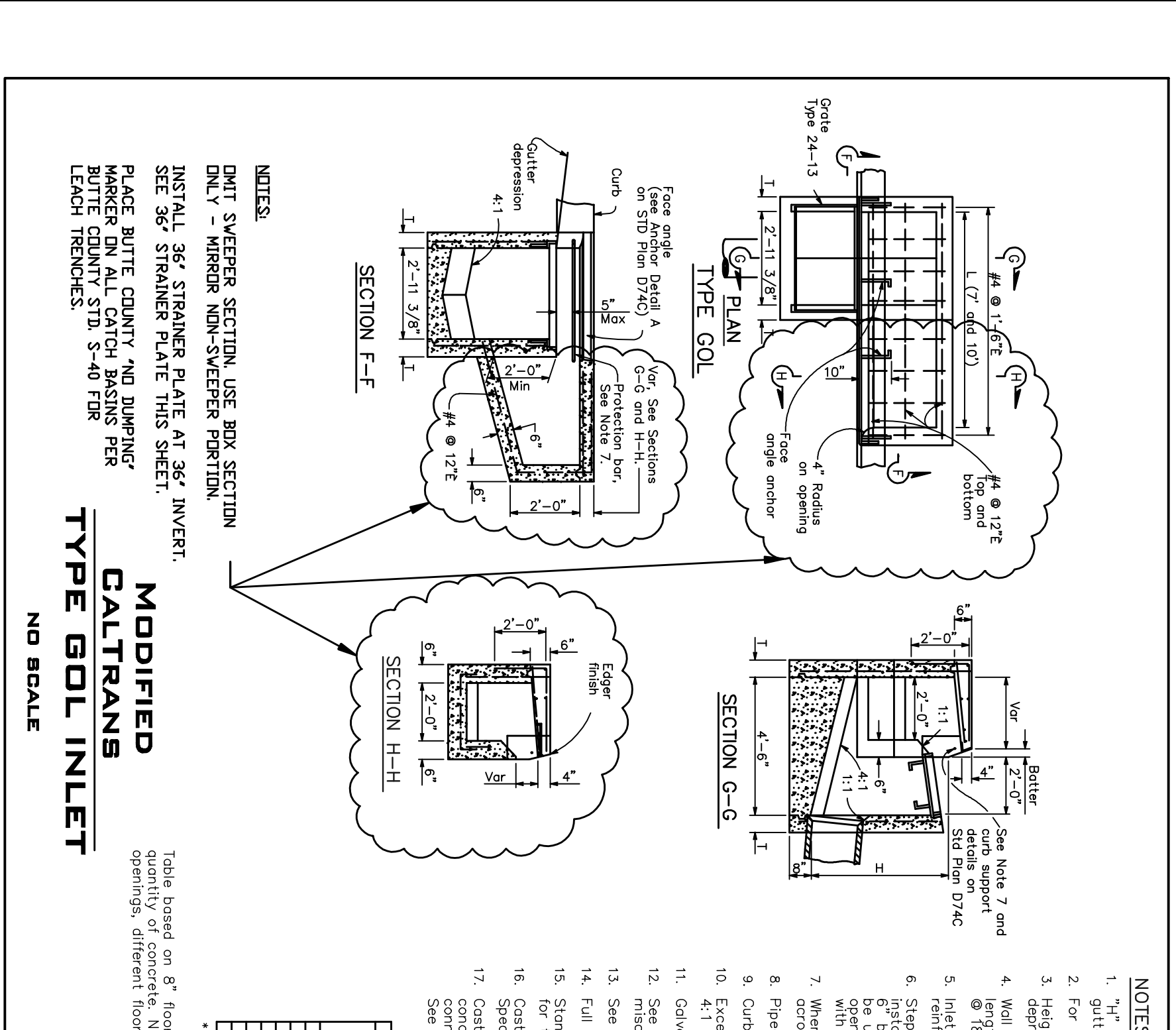
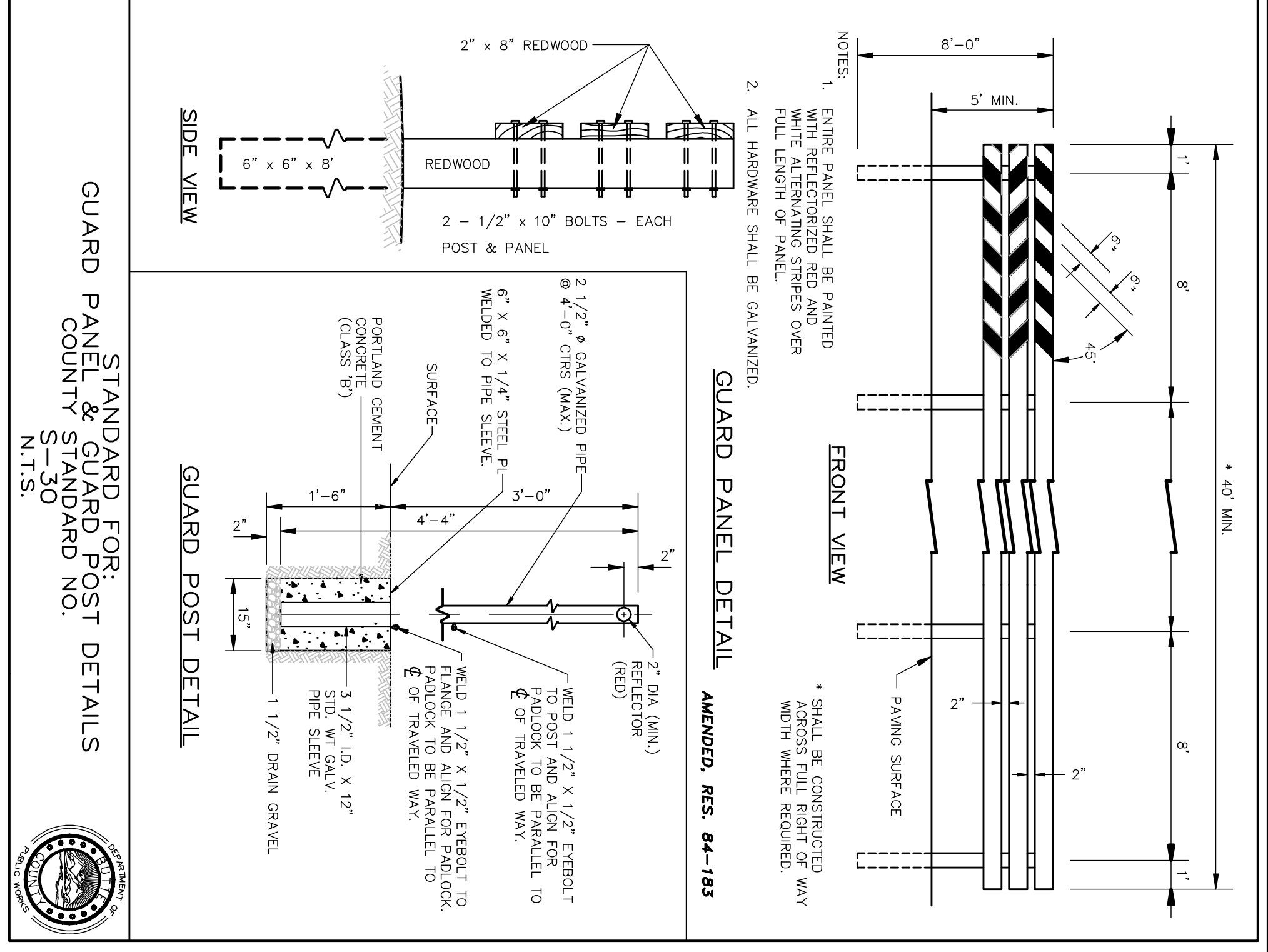
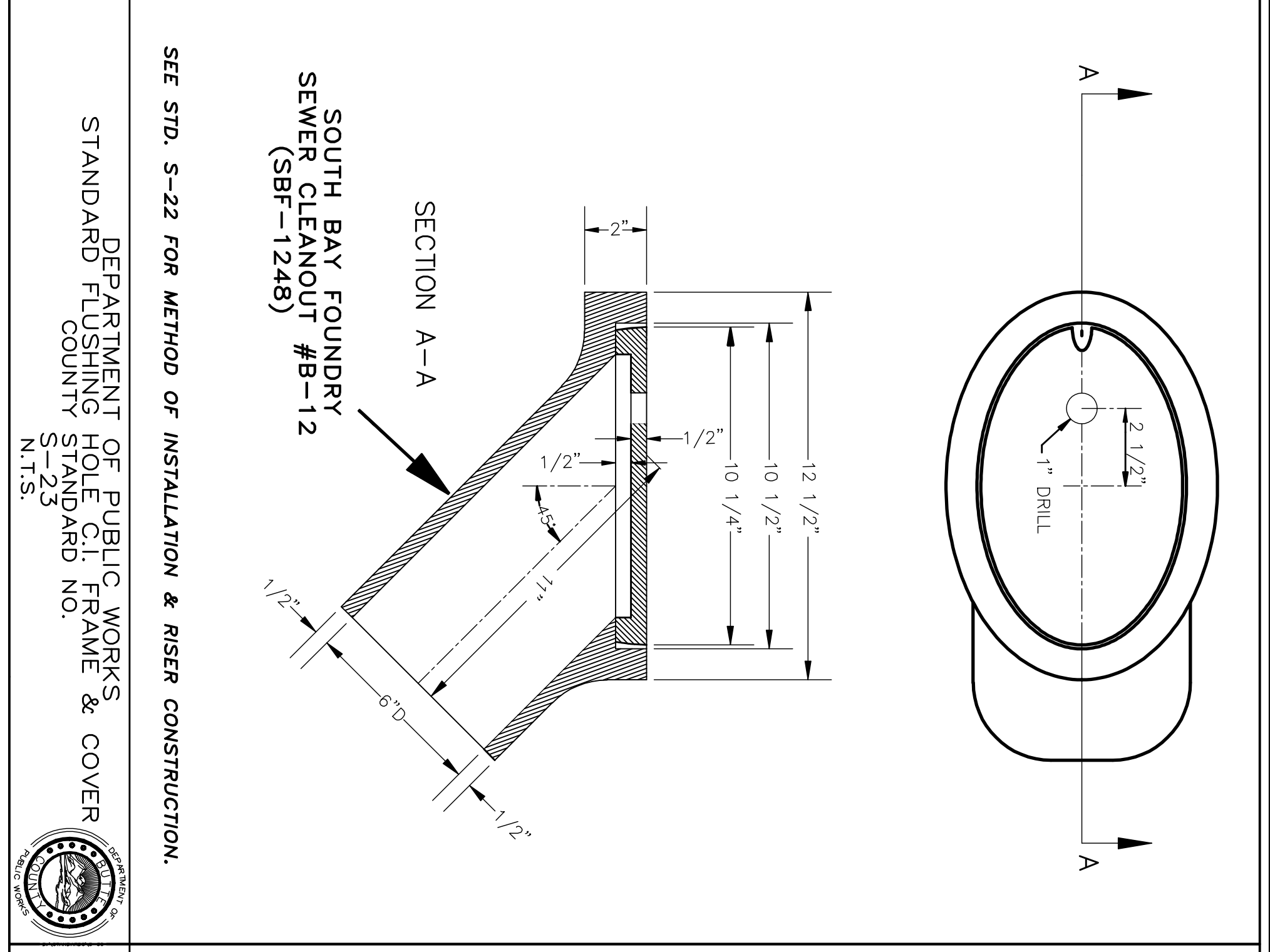
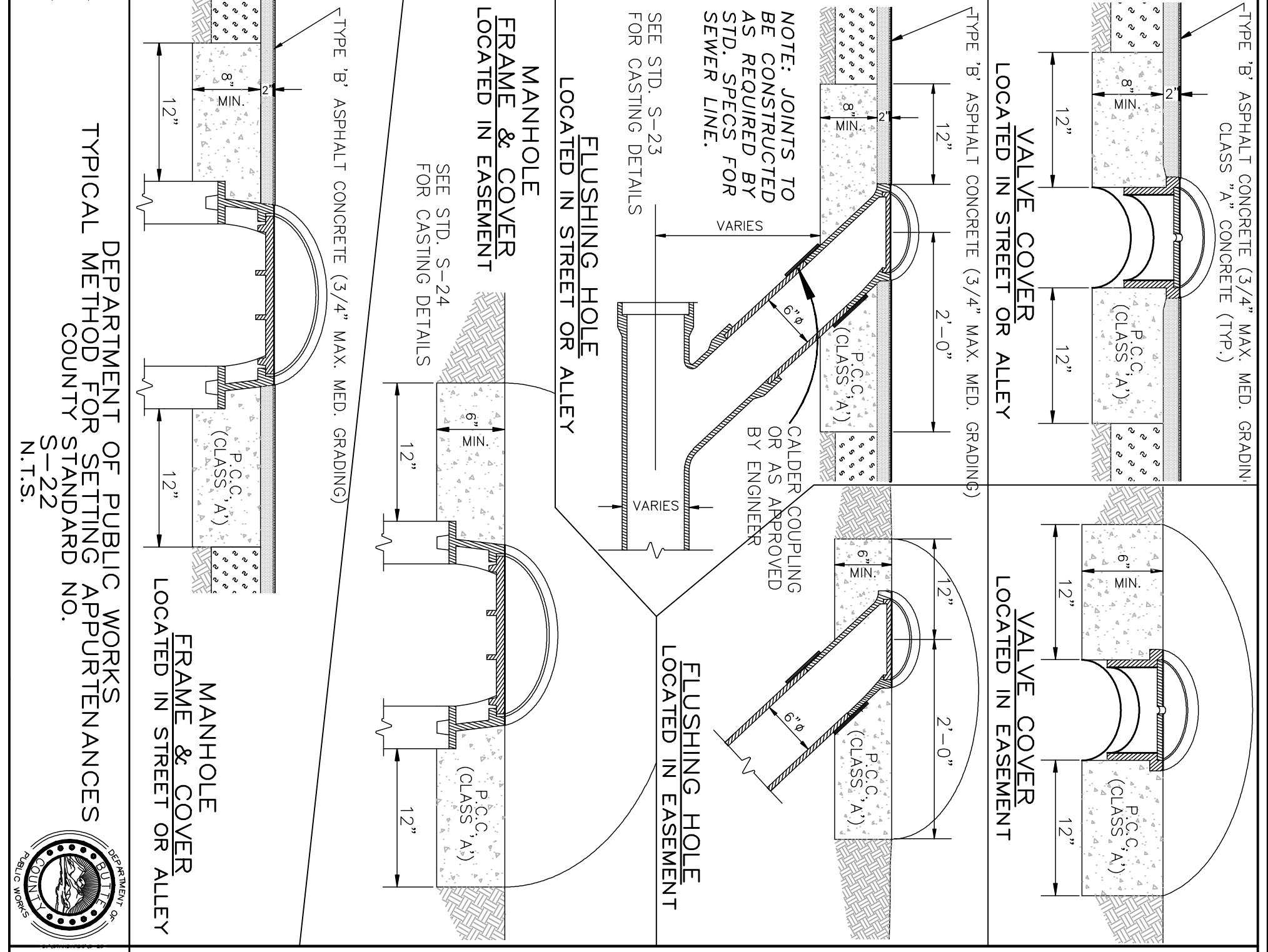
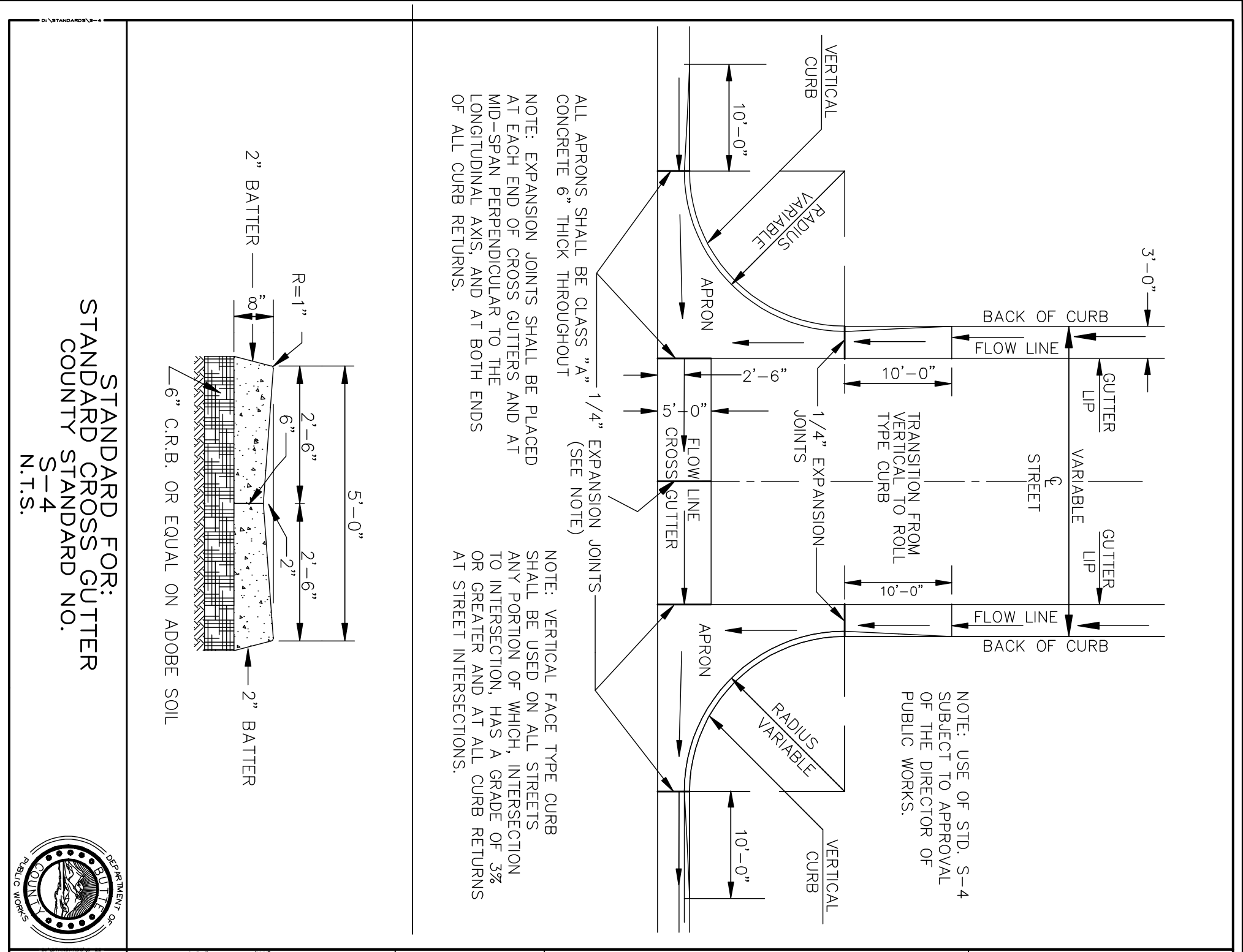


PLDT DATE: 7/23/2009

# PLANS FOR THE CONSTRUCTION OF S.R.-99 FRONTAGE ROAD DETAIL SHEET

4  
1 1  
PROJECT NUMBER:  
SD3350C-05-1

FILE NO. E-2700



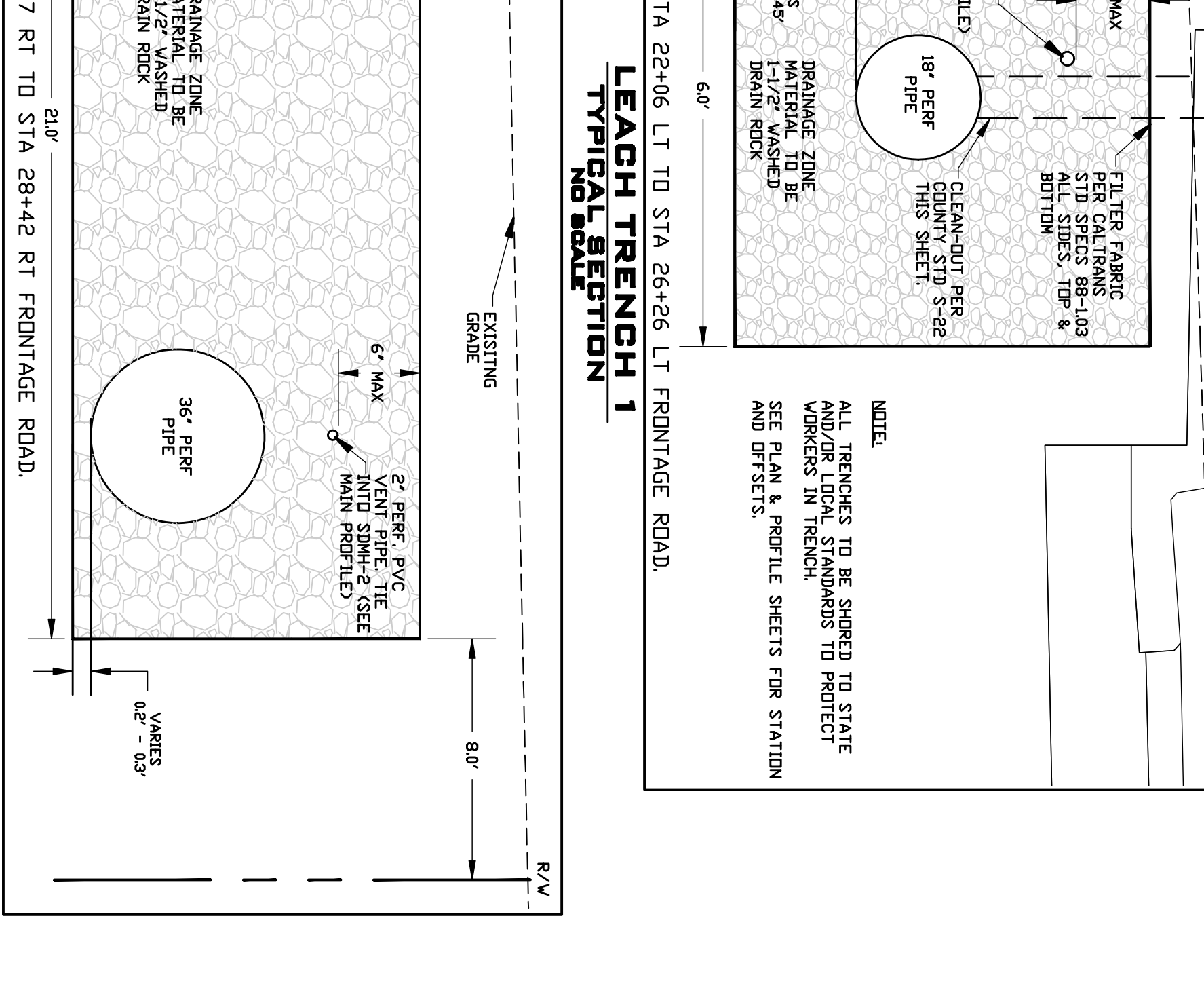
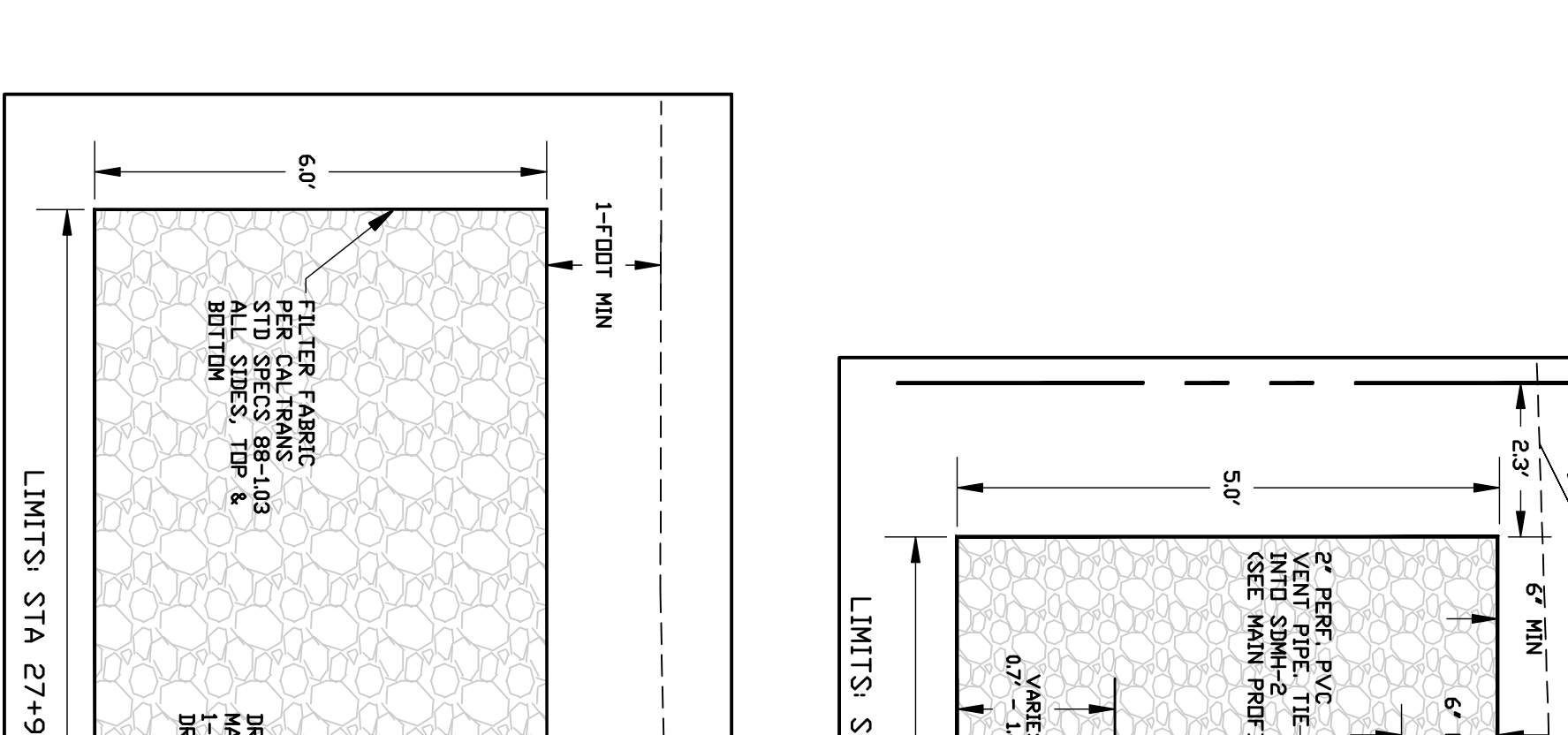
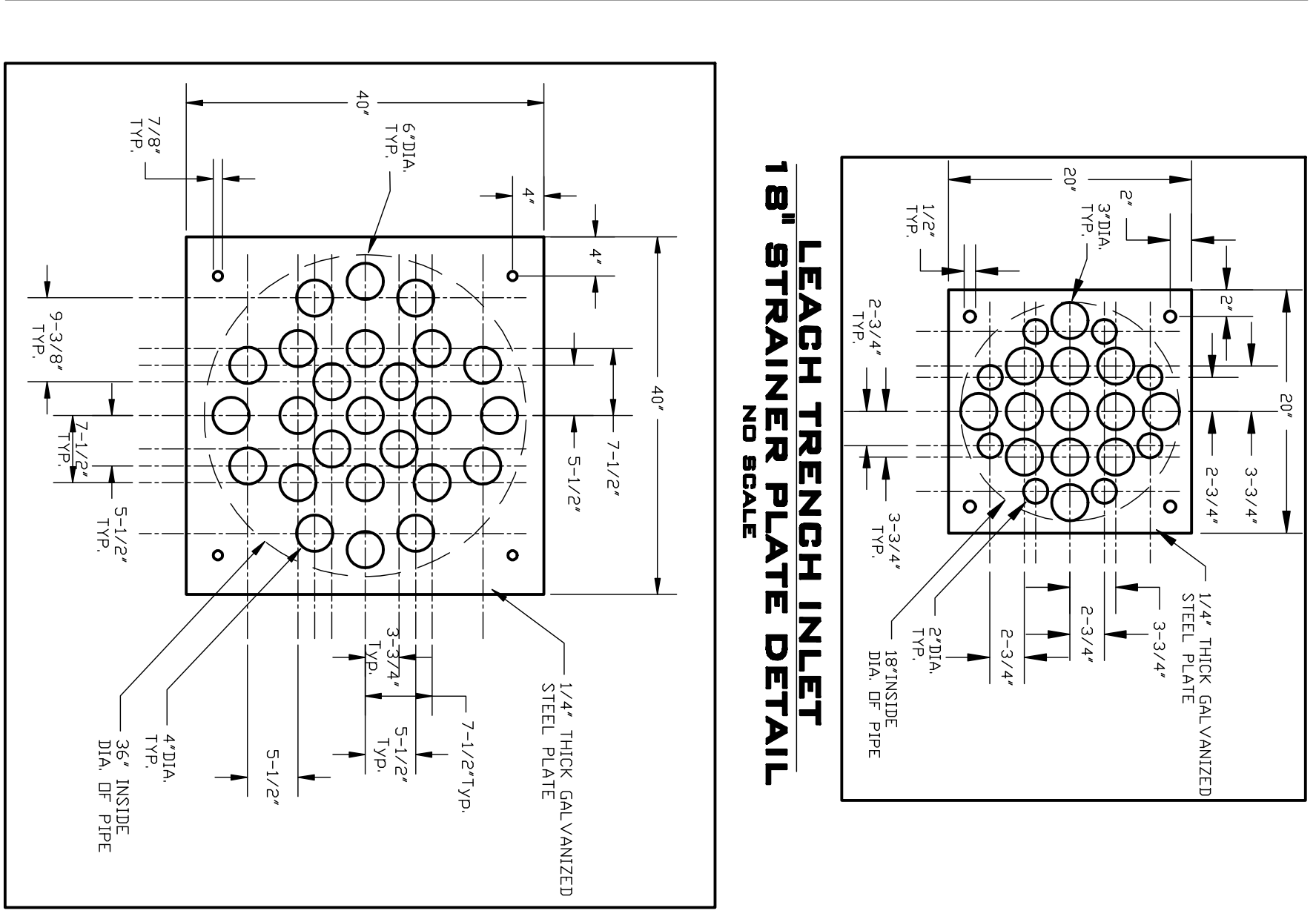
**NOTES:**

1. H<sub>1</sub> is the difference in elevation between the outlet pipe flow line and the normal ground surface.
2. For "T" wall thickness, see Table A below.
3. Height of curb opening will vary with the type of curb and the depth of the local depression.
4. Wall reinforcing not required when "H<sub>1</sub>" is 8'-0" or less and the unsupported width or depth is 7'-0" or less. Walls exceeding these limits shall be reinforced with #4 bars spaced at 48" on center.
5. Inlet bottom reinforcing not required. See Standard Plan D74C for alternative reinforced bottom.
6. Steps-None required where "H<sub>1</sub>" is less than 30". Where "H<sub>1</sub>" is 30" or more, equal steps with lowest curb 1'-0" above the top and highest curb not more than 18" above the top of the wall. The length of the wall steps in the wall without, on only with State Industrial Safety requirements. See Standard Plan D73C for step details.
7. When shown on the project plans, place main curb preventer for roadway across the length of the opening and band back 4' into the inlet wall on each side.
8. Pipe(s) can be placed in any wall.
9. Curb section shall match adjacent curb.
10. Except for inlets used as junction boxes, basin floor shall have a minimum slope of 1/8" per foot.
11. Galvanizing-See Standard Specifications or Special Provisions.
12. See Standard Plans D77A and D77B for grate and frame details and weights of mesh-reinforced concrete.
13. See Standard Plan D78A for gutter depression details.
14. Full penetration butt welds may be substituted for the fillet welds on all locations.
15. Standard square, hexagon, round or equivalent headed anchors may be substituted for the right angle hooks on the anchors shown on this plan.
16. Specifications or precast alternative is optional with contractor. See Standard Specifications for precast alternative.
17. Cast-in-place inlets to be formed around all pipes/status intersecting the inlet, and concrete poured in one continuous operation. Precast inlets shall have measured openings, different flow alternatives, different curb types or different heights of curb openings. See Standard Specifications for mortar composition.

**TABLE A  
CONCRETE QUANTITIES**

Type	H=3'-0" to 4'-0" (T=1'-0")	H=4'-0" to 5'-0" (T=1'-0")	H=5'-0" to 6'-0" (T=1'-0")	H=6'-0" to 7'-0" (T=1'-0")	H=7'-0" to 8'-0" (T=1'-0")	H=8'-0" to 9'-0" (T=1'-0")	H=9'-0" to 10'-0" (T=1'-0")
CS	1.57	1.72	1.87	2.02	2.17	2.32	2.47
OS	1.57	1.72	1.87	2.02	2.17	2.32	2.47
CS	1.57	1.72	1.87	2.02	2.17	2.32	2.47
OS	1.57	1.72	1.87	2.02	2.17	2.32	2.47
CS	1.57	1.72	1.87	2.02	2.17	2.32	2.47
OS	1.57	1.72	1.87	2.02	2.17	2.32	2.47
CS	1.57	1.72	1.87	2.02	2.17	2.32	2.47
OS	1.57	1.72	1.87	2.02	2.17	2.32	2.47

Based on H=3' (UNGRADED G.O.L. DOES NOT APPLY TO CONCRETE QUANTITIES)



**NOTES:**

1. ALL APRONS SHALL BE CLASS "A" CONCRETE 8" THICK THROUGHOUT (SEE NOTE)
2. NOTE: EXPANSION JOINTS SHALL BE PLACED AT EACH END OF CROSS GUTTERS AND AT LONGITUDINAL AXIS AND AT BOTH ENDS OF ALL CURB RETURNS.
3. NOTE: VERTICAL FACE TYPE CURB SHALL BE USED ON ALL STREETS TO INTERSECT OR CROSS OR GREATER AND AT ALL CURB RETURNS AT STREET INTERSECTIONS.
4. NOTE: USE OF STD. S-4 SUBJECT TO APPROVAL OF THE DIRECTOR OF PUBLIC WORKS.
5. VALVE COUPLING OF APPROVED TYPE REQUIRED FOR SEWER LINE. VARIES
6. SEE STD. S-23 FOR CASTING DETAILS
7. SEE STD. S-24 FOR CASTING DETAILS
8. SEE STD. S-22 FOR METHOD OF INSTALLATION & RISER CONSTRUCTION.
9. SOUTH BAY FOUNDRY SEWER CLEANOUT #B-12 (SBF-1248)
10. SEE STD. S-22 FOR METHOD OF INSTALLATION & RISER CONSTRUCTION.
11. STANDARD FOR: GUARD PANEL & GUARD POST COUNTY STANDARD NO. S-30 N.T.S.
12. LEACH TRENCH 1 TYPICAL SECTION 1 NO SCALE
13. LEACH TRENCH 2 TYPICAL SECTION 2 NO SCALE
14. LEACH TRENCH INLET 18" STRAINER PLATE INLET NO SCALE
15. LEACH TRENCH INLET 36" STRAINER PLATE INLET NO SCALE
16. MODIFIED CALTRANS TYPE GOL INLET NO SCALE
17. DRAINAGE INLETS DEPARTMENT OF CALIFORNIA STATE OF CALIFORNIA DEPARTMENT OF PUBLIC WORKS