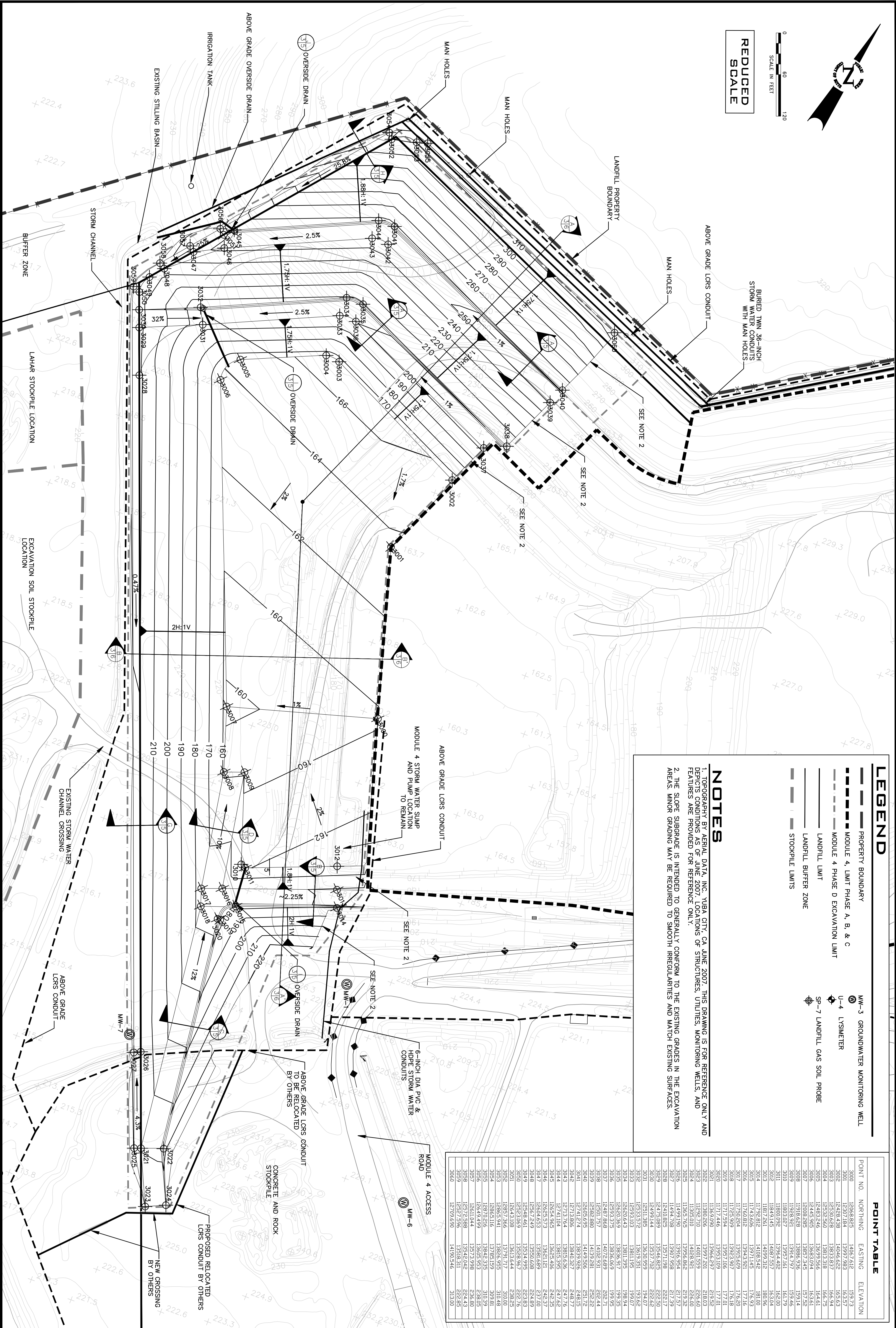


0  
60  
120  
SCALE IN FEET

**REDUCED  
SCALE**



**LEGEND**

- PROPERTY BOUNDARY
- MODULE 4, LIMIT PHASE A, B, & C
- MODULE 4 PHASE D EXCAVATION LIMIT
- LANDFILL LIMIT
- LANDFILL BUFFER ZONE
- STOCKPILE LIMITS
- ⊙ MW-3 GROUNDWATER MONITORING WELL
- ⊙ U-4 LYSMETER
- ⊙ SP-7 LANDFILL GAS SOIL PROBE

**NOTES**

1. TOPOGRAPHY BY AERIAL DATA, INC., YUBA CITY, CA JUNE 2007. THIS DRAWING IS FOR REFERENCE ONLY AND DEPICTS CONDITIONS AS OF JUNE 2007. LOCATIONS OF STRUCTURES, UTILITIES, MONITORING WELLS, AND FEATURES ARE PROVIDED FOR REFERENCE ONLY.
2. THE SLOPE SUBGRADE IS INTENDED TO GENERALLY CONFORM TO THE EXISTING GRADES IN THE EXCAVATION AREAS. MINOR GRADING MAY BE REQUIRED TO SMOOTH IRREGULARITIES AND MATCH EXISTING SURFACES.

**POINT TABLE**

POINT NO.	NORTHING	EASTING	ELEVATION
3000	12606.825	14667.612	159.73
3001	12607.184	13997.983	163.97
3002	12428.438	14046.682	165.63
3003	12530.658	13933.837	166.94
3004	12532.560	13913.318	166.75
3005	12443.506	13643.936	163.61
3006	12606.285	13867.345	157.92
3007	11918.628	13886.936	159.14
3008	11928.921	13914.797	159.46
3009	11803.027	13957.161	161.79
3010	11800.092	13964.402	162.00
3011	11792.812	14008.542	160.96
3012	11743.686	13971.145	176.93
3013	11743.686	13943.821	177.16
3014	11750.204	13915.609	176.80
3015	11750.204	13923.907	175.18
3016	11729.909	13923.907	175.18
3017	11717.444	13953.109	177.01
3018	11717.444	13953.109	177.01
3019	11669.090	13966.697	219.92
3020	11669.090	13997.201	218.93
3021	11292.710	14001.559	226.60
3022	11292.710	14028.921	226.60
3023	11292.710	14028.921	226.60
3024	11292.710	14028.921	226.60
3025	11292.710	14028.921	226.60
3026	11292.710	14028.921	226.60
3027	11292.710	14028.921	226.60
3028	11292.710	14028.921	226.60
3029	11292.710	14028.921	226.60
3030	11292.710	14028.921	226.60
3031	12511.385	13530.959	194.07
3032	12533.572	13613.351	193.62
3033	12533.572	13613.351	193.62
3034	12620.643	13811.395	198.94
3035	12620.643	13836.917	199.35
3036	12593.375	13836.069	199.95
3037	12487.868	1402.649	202.71
3038	12487.868	1402.649	202.71
3039	12487.868	1402.649	202.71
3040	12487.868	1402.649	202.71
3041	12487.868	1402.649	202.71
3042	12713.764	13915.395	247.76
3043	12713.764	13915.395	247.76
3044	12741.104	13915.395	247.62
3045	12544.995	13653.006	242.35
3046	12544.995	13653.006	242.35
3047	12567.249	13561.689	237.00
3048	12567.249	13561.689	237.00
3049	12548.461	13534.995	223.83
3050	12523.069	13528.967	222.76
3051	12643.108	13613.644	238.85
3052	12657.286	13791.717	310.00
3053	12657.286	13791.717	310.00
3054	12663.116	13785.159	309.81
3055	12649.216	13605.953	236.05
3056	12649.216	13572.998	236.80
3057	12649.216	13572.998	236.80
3058	12627.396	13918.311	226.65
3059	12627.396	14193.946	313.80

**PLANS FOR THE EXCAVATION OF  
MODULE 4, PHASE D  
SUBGRADE EXCAVATION PLAN**

3 of 6  
757-5916  
757-5916

