



APPROVED 11/7/08 2008
Michael Drury
 T. MICHAEL DRURY, DIRECTOR OF PUBLIC WORKS
 R.C.E. 041977 (LIC. EXP. MARCH 31, 2010)

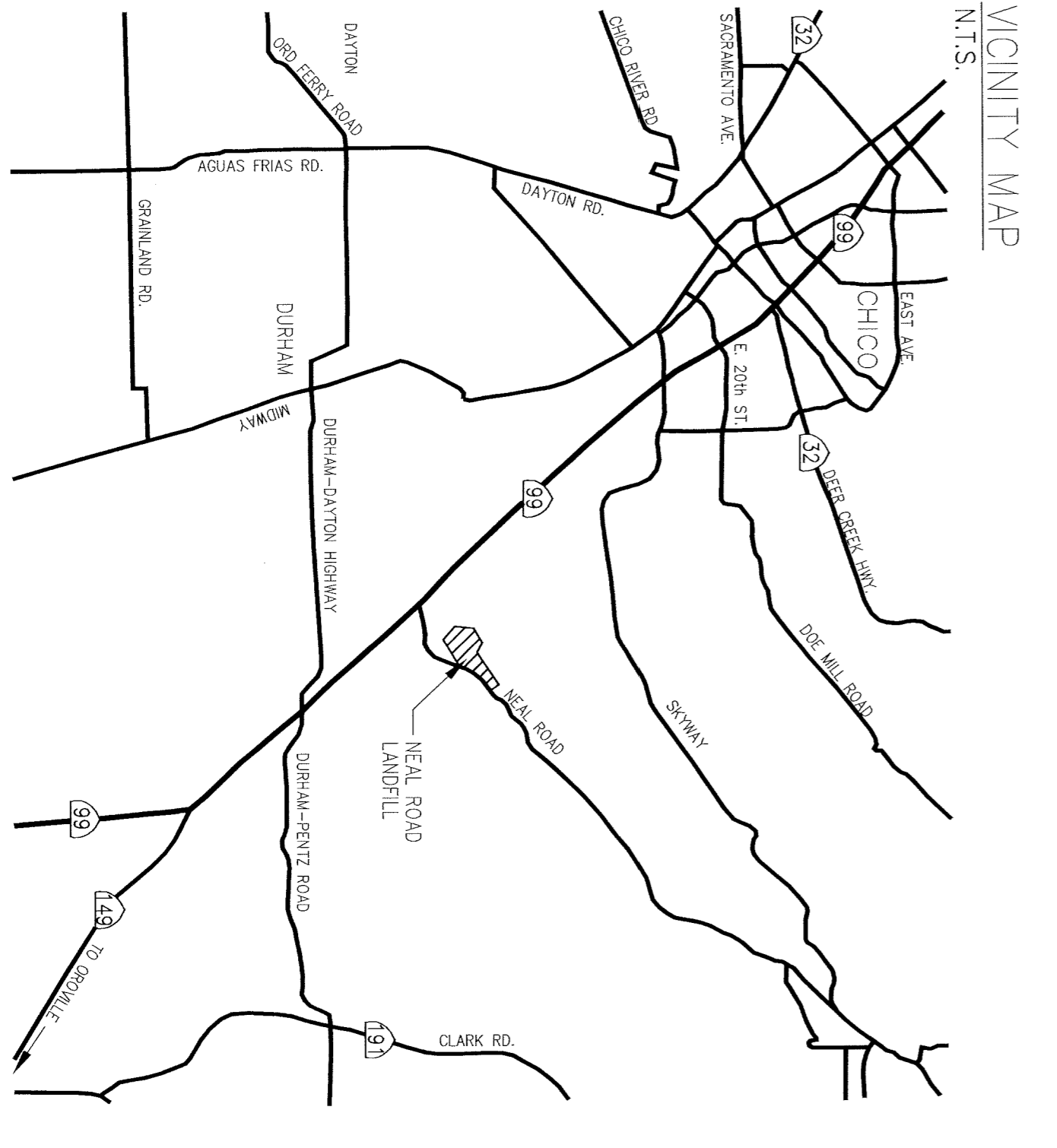
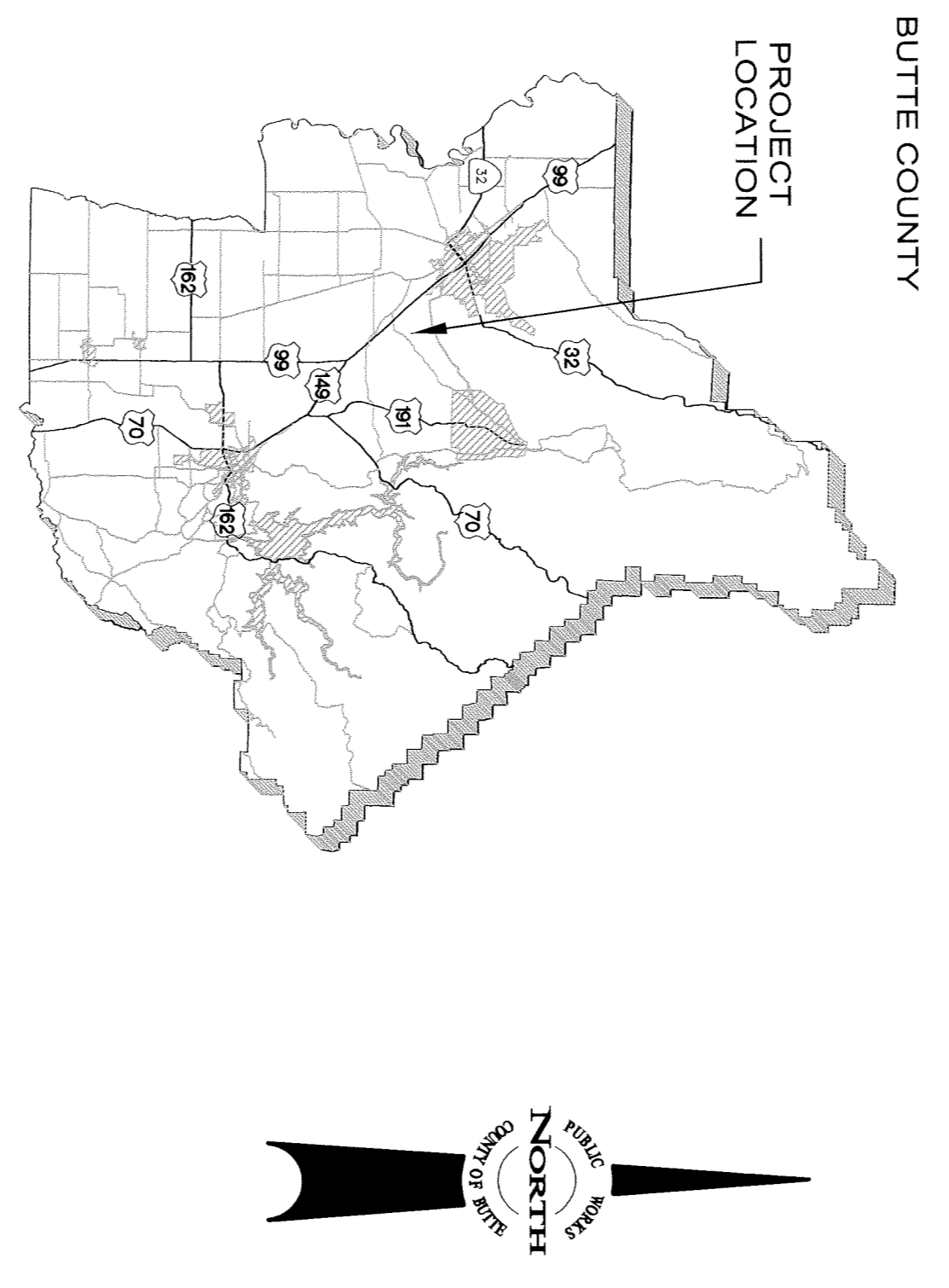
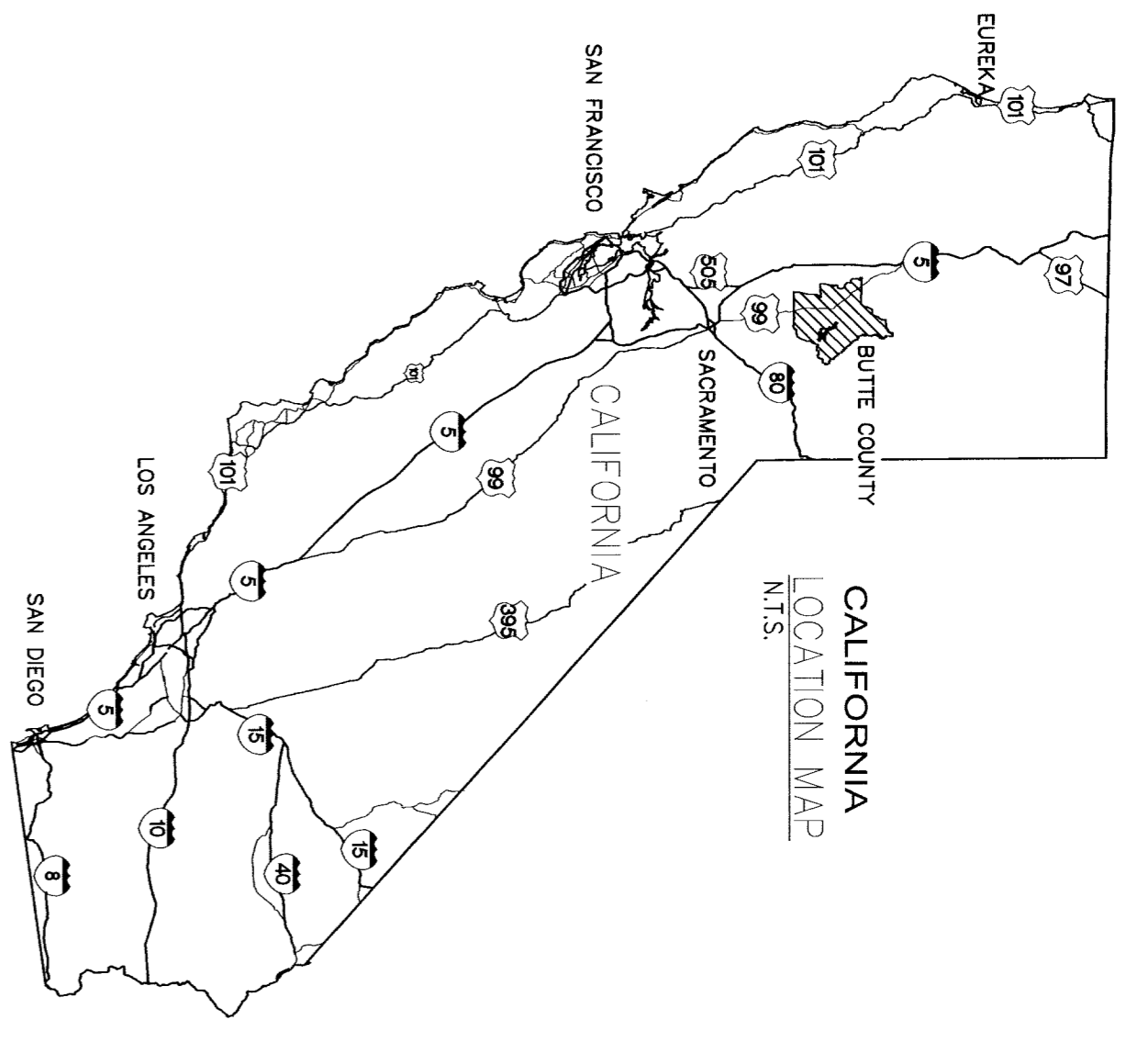
THE CONTRACTOR SHALL POSSESS A CLASS "A" LICENSE OR A COMBINATION OF CLASSES REQUIRED BY THE CATEGORIES AND TYPE OF WORK INCLUDED IN THIS CONTRACT AT THE TIME THIS CONTRACT IS AWARDED.

PUBLIC USER DROP-OFF AND RECYCLING FACILITY

COUNTY PROJECT NO. 757-5943

NEAL ROAD SANITARY LANDFILL 1023 NEAL ROAD PARADISE, CALIFORNIA 95969

COUNTY OF BUTTE DEPARTMENT OF PUBLIC WORKS 7 COUNTY CENTER DRIVE OROVILLE, CALIFORNIA 95965



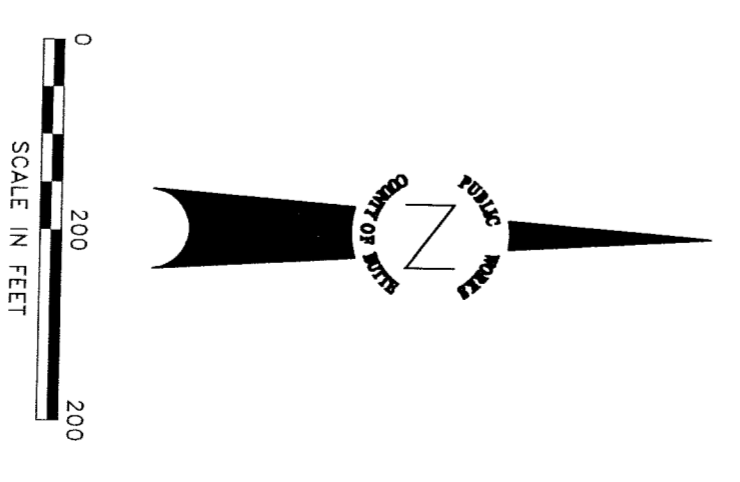
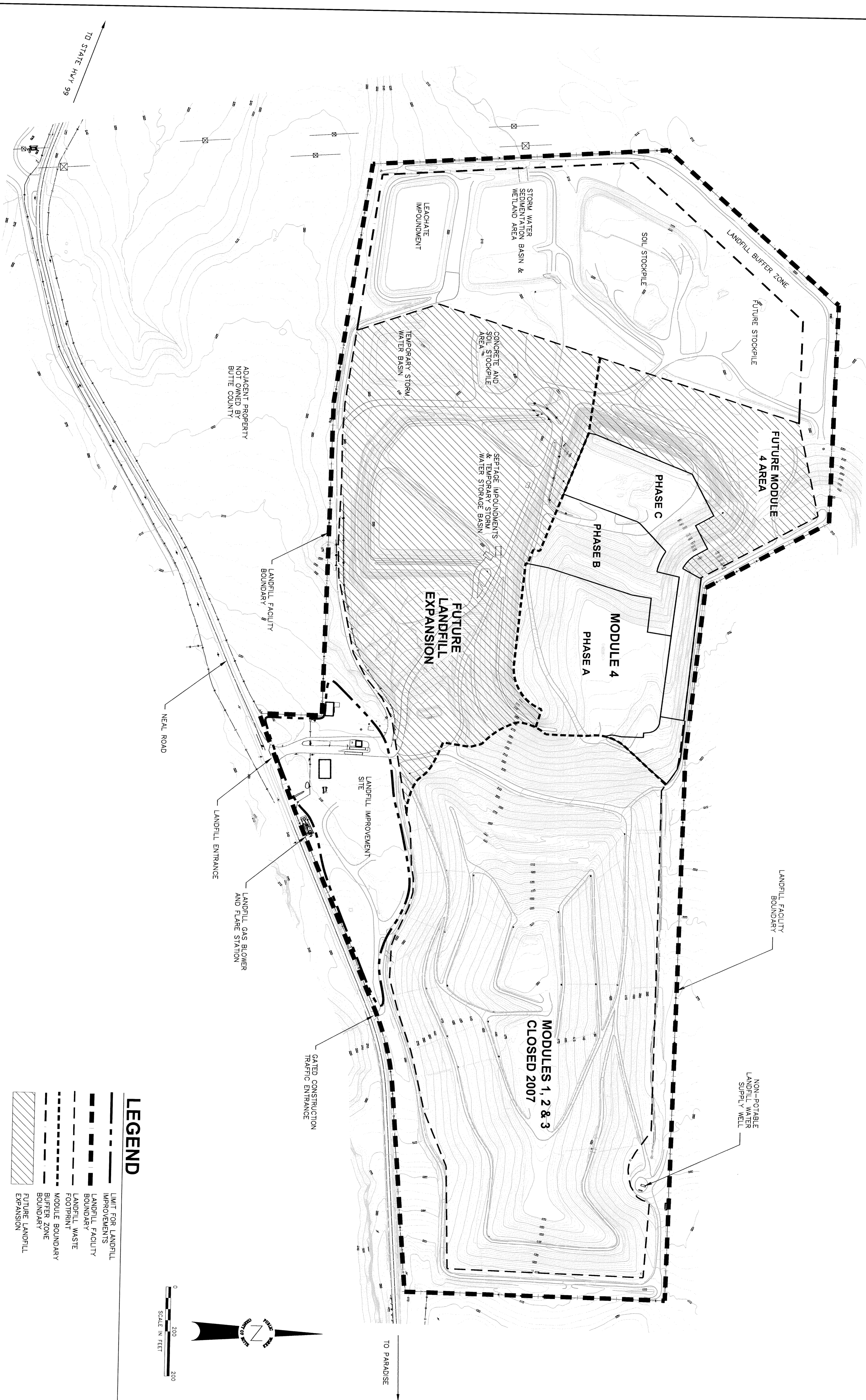
INDEX OF SHEETS

DRAWING NO.	DESCRIPTION
1	TITLE SHEET
2	SITE PLAN
3	LOCATION PLAN

ABBREVIATIONS	STATE OF CALIFORNIA DEPARTMENT OF TRANSPORTATION
CALTRANS	STATE OF CALIFORNIA DEPARTMENT OF TRANSPORTATION
C.M.P. OR CWP	CORRUGATED METAL PIPE
C.P.P. OR CPP	CORRUGATED PLASTIC PIPE
D.I. OR DI	DROP INLET
D.I.A. OR D/A	DIAPHRAGM
E	EASTING
E.W. OR EW	EXTRACTION WELL
H.D.P.E. OR HDPE	HIGH-DENSITY POLYETHYLENE
IN. OR IN	INCHES
INV. OR IE	INVERT ELEVATION
LC.R.S. OR LCRS	LEACHATE COLLECTION AND RECOVERY SYSTEM
LFG	LANDFILL GAS
MAX. OR MAX	MAXIMUM
M.H. OR MH	MANHOLE
MIN. OR MIN	MINIMUM
N	NORTHING
N.T.S. OR NTS	NOT TO SCALE
O.C.	ON CENTER
OZ. OR OZ	OUNCE
P.V.C. OR PVC	POLYVINYL CHLORIDE
S	SLOPE
SCH. OR SCH	SCHEDULE
S.I.D.R. OR SDR	STANDARD DIMENSION RATIO
S.S. OR SS	STAINLESS STEEL
STA. OR STA	STATION
STD.	STANDARD
TYP. OR TYP	TYPICAL
UG. OR UG	UNDERGROUND



**PLANS FOR THE LOCATION AND DESIGN OF
PUBLIC USER DROP-OFF AND RECYCLING FACILITY
SITE PLAN
BUTTE COUNTY, CA**



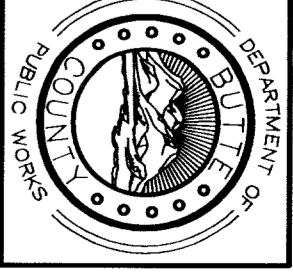
LEGEND

	LIMIT FOR LANDFILL IMPROVEMENTS
	LANDFILL FACILITY BOUNDARY
	LANDFILL WASTE FOOTPRINT
	MODULE BOUNDARY
	BUFFER ZONE BOUNDARY
	FUTURE LANDFILL EXPANSION

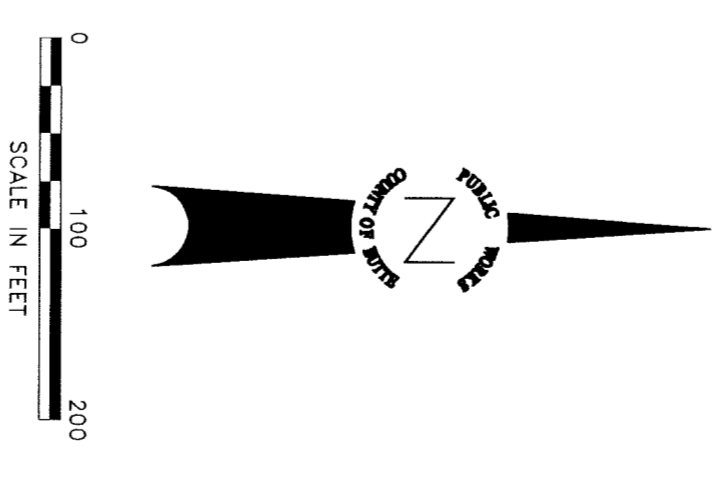
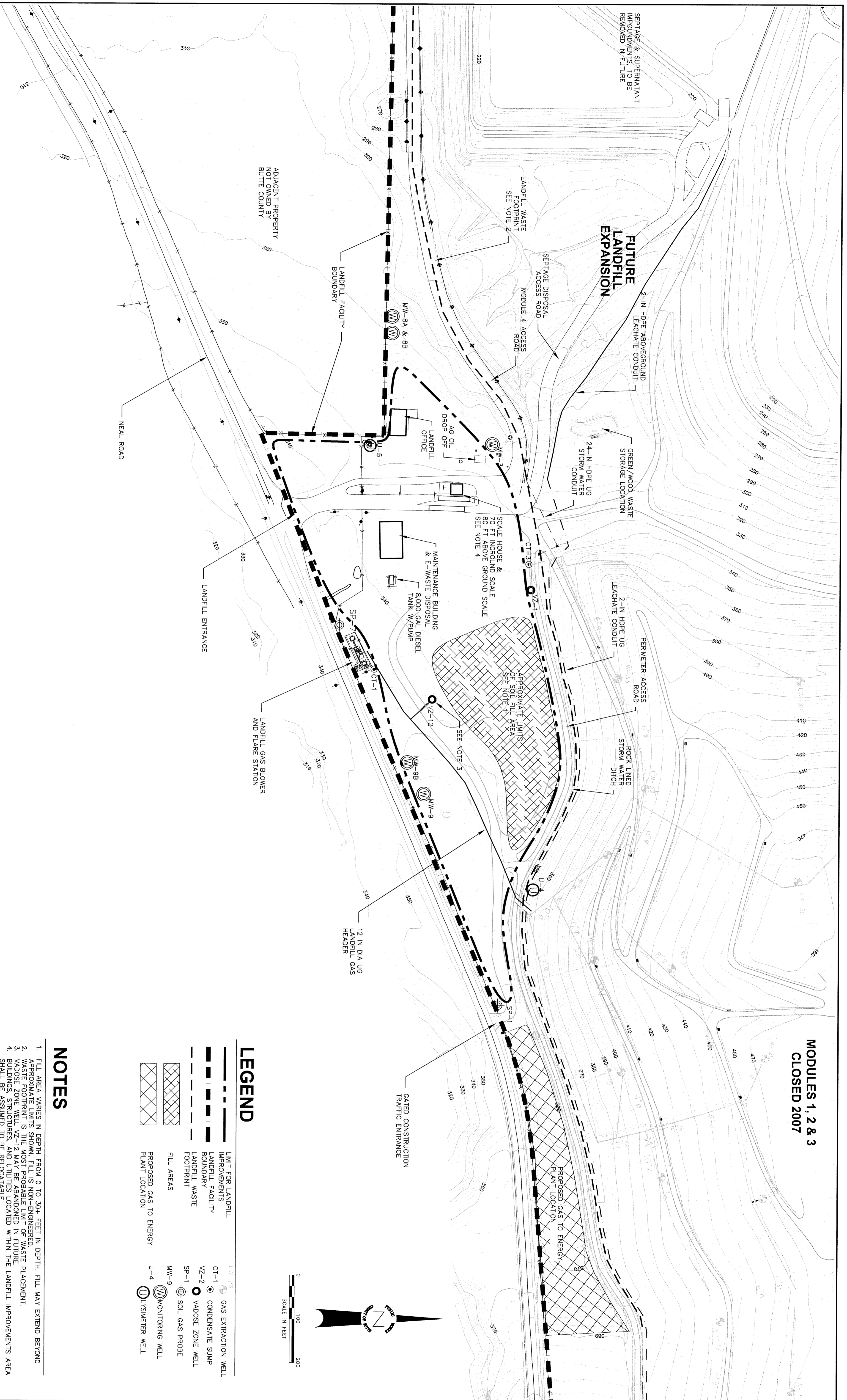
THIS SHEET IS FOR REFERENCE ONLY AND DEPICTS CONDITIONS AS OF SEPTEMBER 2008. LOCATIONS OF STRUCTURES, WELLS, AND OTHER FEATURES ARE PROVIDED FOR BEGINNING ONLY AND SHOULD BE LOCATED BY CONTRACTOR OR CONSULTANT PRIOR TO THIS SHEET WAS PREPARED BY BUTTE COUNTY DEPARTMENT OF PUBLIC WORKS. TOPOGRAPHY BY AERIAL DATA, INC. OF YUBA CITY, CA, JULY 15, 2008.

757-5943

2 of 3



**MODULES 1, 2 & 3
CLOSED 2007**



LEGEND

	LIMIT FOR LANDFILL IMPROVEMENTS		GAS EXTRACTION WELL
	LANDFILL FACILITY BOUNDARY		CT-1 CONDENSATE SLUMP
	LANDFILL WASTE FOOTPRINT		VZ-2 VADOSE ZONE WELL
	FILL AREAS		SP-1 SOIL GAS PROBE
	PROPOSED GAS TO ENERGY PLANT LOCATION		MW-9 MONITORING WELL
			U-4 PERIMETER WELL

NOTES

1. FILL AREA VARIES IN DEPTH FROM 0 TO 30+ FEET IN DEPTH. FILL MAY EXTEND BEYOND APPROXIMATE LIMITS SHOWN. FILL IS NON-ENGINEERED.
2. APPROXIMATE LIMITS OF WASTE PLACEMENT.
3. VADOSE ZONE WELL VZ-2 MAY BE RELOCATED DUE TO UTILITY PLACEMENT.
4. BUILDINGS, STRUCTURES, AND UTILITIES LOCATED WITHIN THE LANDFILL IMPROVEMENTS AREA SHALL BE ASSUMED TO BE RELOCATABLE.

THIS SHEET IS FOR REFERENCE ONLY AND DEPICTS CONDITIONS AS OF SEPTEMBER 2008. LOCATIONS OF STRUCTURES, UTILITIES, WELLS, AND OTHER FEATURES ARE PRESENTED FOR REFERENCE ONLY AND SHOULD BE LOCATED BY CONTRACTOR OR CONSULTANT PRIOR TO BEGINNING ANY WORK. THIS SHEET WAS PREPARED BY BUTTE COUNTY DEPARTMENT OF PUBLIC WORKS. TOPOGRAPHY BY AERIAL DATA, INC. OF VUBA CITY, CA, JULY 15, 2008.

**PLANS FOR THE LOCATION AND DESIGN OF
PUBLIC DROP-OFF AND RECYCLING FACILITY
LOCATION PLAN
BUTTE COUNTY, CA**

757-5943