



## *Butte County*

LAND OF NATURAL WEALTH AND BEAUTY

**C. LINDA BARNES**

**TREASURER - TAX COLLECTOR**

COUNTY ADMINISTRATIVE BUILDING

25 COUNTY CENTER DRIVE, SUITE 125

OROVILLE, CALIFORNIA 95965-3384

TELEPHONE: (530) 538-7701

FAX: (530) 538-7648

### **Treasurer's Investment Report - Introduction**

The Butte County Treasurer's office manages investments on behalf of the County, various Trust and Agency Funds, School Districts and Special Districts within the County. "Pooling" deposits from local agencies and other participants is in the public interest because banking and investment activities are consolidated, thereby reducing duplication, achieving economies of scale and carrying out coherent investment strategies. Butte County's portfolio management is an active management strategy in that a broad range of market analysis techniques, investment options, and cash management tools are employed in making investment decisions. The medium term, laddered maturity portfolio allows participants to benefit from higher earnings than might otherwise be possible. The objective of this strategy is to obtain the highest return feasible, consistent with a high degree of safety of principal and the level of liquidity necessary to meet the needs of the County and agencies participating in the Treasury. Earnings on the pooled investments are paid quarterly on a pro-rata basis to pool participants.

The Treasurer's Investment Report is designed to provide specific and general investment information to pool participants and to interested members of the public. The cover letter indicates our compliance with the Butte County Treasurer's Statement of Investment Policy, identifies U.S. Bank as the source of the market value of investments held in the investment pool, and states our ability to meet estimated liquidity needs for the next six months.

The cover letter also compares the portfolio yield and that of the State Treasurer on a five-year rolling average basis, which serves to effectively demonstrate the bottom line in terms of enhanced earnings to pool participants. The Butte County Pooled Treasury Portfolio's medium term, laddered investment strategy underperformed the State of California's Local Agency Investment Fund (LAIF) in Fiscal Year (FY) 07/08 by a margin of  $-.105\%$  and outperformed LAIF by  $1.475\%$  in FY 08/09.\* Market conditions (lowering interest rates) allowed the portfolio to outperform LAIF significantly in three of the past five years. In a rising market, the portfolio's yield will more closely approximate that of LAIF and may drop below LAIF's yield, from time to time. A look at the 5 year moving average for the Butte County Treasury yields vs. LAIF yields demonstrates that, over time, a medium term, laddered portfolio will generally outperform a shorter term investment strategy, which LAIF usually mirrors. The 5 year moving average for Butte County's FY 07/08 and FY 08/09 performance compared to LAIF shows margins of  $.67\%$  and  $.484\%$ , respectively.\* Looking at a ten year average, the portfolio exceeded LAIF's yields by a healthy  $.965\%$ .

Page 1 of the Investment Report shows the portfolio balance (separately identifying the actively managed portfolio), the average number of days to maturity and the yield to maturity for the investments held by the pool. The balances invested are shown in three different ways: Par Value (the value at maturity of the instrument), Fair Value (the value if sold on the date of the report) and Cost Carried (the amount paid for the investment, amortized to reach Par value by maturity). The difference between the fair value of the investments and the cost carried is considered to be “unrealized” gain or loss. A gain or loss is only realized if a security is sold prior to maturity (T-Bills, Agency Notes and Commercial Paper are redeemed at a pre-established Par Value at maturity). It is important to note that the Butte County Pooled Treasury typically uses a “buy and hold” investment strategy. Cash flow and liquidity needs are carefully analyzed prior to making investments to ensure liquidity needs are met. The bottom portion of page 1 indicates the ability of the pool to meet projected cash flow requirements for the next six months. Please note, however, that the projected and actual results will vary, sometimes materially, because events and circumstances do not always occur as predicted.

School Bond Proceeds and, if appropriate, Tax and Revenue Anticipation Notes (TRAN) proceeds, are separately accounted for in the report, and are invested in the State Treasurer’s Local Agency Investment Fund (LAIF) or other securities as deemed appropriate. Note that the annual portfolio yields quoted (the yield method used is “weighted yield to maturity”) exclude separately invested Bond and TRAN proceeds, as well as investments managed by Trustees, as they are not part of the actively managed portfolio. Investments of School Bond Proceeds are detailed on page 2 of the report, and investments managed by outside Trustees as part of lending agreements are detailed on page 3.

Page 4 of the Report contains chart information that is very helpful in providing a quick overview of the diversification of the portfolio by type of instrument and maturity ranges. Included is a chart showing the Treasury Portfolio balance fluctuations from 2003 through the current month (Investments Managed by Trustees, TRAN and Bond proceeds are not included in the charted information). An analysis of this chart clearly demonstrates that the Treasury maintains a stable average balance of approximately \$275,000,000, which supports the philosophy of medium term investment of funds not anticipated to be drawn upon to meet ongoing liquidity needs. Page 5 provides a listing of specific investment instruments (listed in order of maturity date), credit ratings, purchase and maturity dates, balances invested and yields obtained.

The Treasury Oversight Committee and the Board of Supervisors receive the Treasurer’s Investment Report on a monthly basis. The Treasury Oversight Committee was established in April of 2000 in accordance with California Government Codes 27131 through 27137 and serves to ensure that representatives of pool participants are involved in the oversight of the Butte County Treasury pooled investment portfolio.

Questions regarding the Investment Report may be directed to Peggy Moak, Assistant Treasurer-Tax Collector (Treasury), at 530-538-7443, or [pmoak@buttecounty.net](mailto:pmoak@buttecounty.net).

---

\* The margins quoted represent the difference between the annual yields of the Butte County Pooled Treasury Investment Portfolio and the Local Agency Investment Fund.



## Butte County

LAND OF NATURAL WEALTH AND BEAUTY

**C. LINDA BARNES**  
**TREASURER - TAX COLLECTOR**

COUNTY ADMINISTRATIVE BUILDING  
25 COUNTY CENTER DRIVE, SUITE 125  
OROVILLE, CALIFORNIA 95965-3384  
TELEPHONE: (530) 538-7701  
FAX: (530) 538-7648

July 27, 2009

Butte County Board of Supervisors  
Butte County Chief Administrative Officer

The attached investment report for June 30, 2009 is submitted in accordance with the Butte County Statement of Investment Policy dated July 1, 2008. All investments are in compliance with this policy.

The attached Investment Report demonstrates that sufficient liquidity is available to meet anticipated expenditures during the next six months.

The Local Agency Investment Fund (LAIF) is used as a benchmark for portfolio performance. In the current market, the portfolio's yield may drop below LAIF's yield from time to time, as was the case in Fiscal Year 07/08. A look at the 5 year moving average for the Butte County Treasury yields vs. LAIF yields demonstrates that, over time, a medium term, laddered portfolio will generally outperform a shorter term investment strategy, which LAIF usually mirrors. The 5 year moving average for Butte County Treasury yields for Fiscal Years 06/07 and 07/08 compared to those of LAIF shows margins of 1.178% and .67%, respectively. Using \$275,000,000 as a baseline portfolio (actively invested balance), this translates to enhanced earnings averaging \$1,842,500 per year for the past five years.

Investments are marked to market monthly based on a current market price determined by US Bancorp Investments.

Quarterly Investment Reports are made available on the Treasurer-Tax Collector website at <http://www.buttecounty.net/ttc>.

Yours truly,

Handwritten signature of C. Linda Barnes in blue ink.

C. Linda Barnes  
Butte County Treasurer-Tax Collector

cc: Butte County Auditor-Controller  
Butte County Board of Supervisors  
Butte County District Attorney  
Butte County Schools-JPA  
Butte County Sheriff  
Butte County Superintendent of Schools

Butte-Glenn Community College  
Farrell, Sean – Deputy CFO  
Iturria, Greg – Interim CAO  
Treasury Oversight Committee  
Wiley, Kenneth – Auditor's Office

Quarterly:  
Butte County Special Districts

CDIAC



## BUTTE COUNTY TREASURER'S INVESTMENT REPORT

### Butte County Pooled Treasury Fair Value as of 6/30/09\*

Investment	Cost Carried (CC)	Fair Value (FV)	Percentage (FV/CC)
LAIF	\$ 74,705,287.60	\$ 74,841,963.31	100.1829532%
CalTrust	\$ 20,202,634.25	\$ 20,202,634.25	100.0000000%
CDs	\$ 500,000.00	\$ 500,000.00	100.0000000%
Federal Agency Notes	\$ 215,741,285.76	\$ 223,782,550.88	103.7272723%
FDIC Corp Notes	\$ 15,074,572.82	\$ 15,454,250.00	102.5186596%
School Bonds			
LAIF	\$ 66,568,681.60	\$ 66,690,471.13	100.1829532%
Federal Agency Notes	\$ 9,961,230.99	\$ 10,095,472.50	101.3476398%
Money Market Funds	\$ 107,292.35	\$ 107,292.35	100.0000000%
Investments under Mgmt of Trustees			
Federal Agency Notes	\$ 1,398,962.04	\$ 1,415,303.10	101.1680846%
Money Market Funds	\$ 6,378,798.84	\$ 6,378,798.84	100.0000000%
<b>TOTAL</b>	<b>\$ 410,638,746.25</b>	<b>\$ 419,468,736.37</b>	<b>102.1503061%</b>

**102.15%**

\* The fair value of the pooled Treasury portfolio is 102.15% of the cost-carried balance as of 6-30-09

(Please refer to attached "Treasurer's Investment Report - Introduction" for additional perspective)



June 30, 2009

## BUTTE COUNTY TREASURER'S INVESTMENT REPORT

ACTIVELY MANAGED PORTFOLIO:	YIELD TO MATURITY	WEIGHTED AVERAGE MATURITY (DAYS)*	PAR VALUE	FAIR VALUE	COST CARRIED
LOCAL AGENCY INVESTMENT FUND (LAIF)	1.377%	1	74,705,287.60	74,841,963.31	74,705,287.60
CALTRUST	0.900%	1	20,202,634.25	20,202,634.25	20,202,634.25
CERTIFICATES OF DEPOSIT	4.850%	1,029	500,000.00	500,000.00	500,000.00
FEDERAL AGENCY NOTES**	4.170%	1,005	214,420,000.00	223,782,550.88	215,741,285.76
COMMERCIAL PAPER**	-	-	0.00	0.00	0.00
FDIC CORPORATE NOTES**	2.887%	1,022	15,000,000.00	15,454,250.00	15,074,572.82
MONEY MARKET FUNDS	-	-	0.00	0.00	0.00
NEGOTIABLE CDs	-	-	0.00	0.00	0.00
<b>TOTAL ACTIVELY MANAGED PORTFOLIO:</b>	<b>3.269%</b>	<b>714</b>	<b>324,827,921.85</b>	<b>334,781,398.44</b>	<b>326,223,780.43</b>

INVESTMENT OF NOTE AND BOND PROCEEDS	PAR VALUE	FAIR VALUE	COST CARRIED
<b>BONDS</b> (see "Investment of School Bond Proceeds," for details)	76,525,973.95	76,893,235.98	76,637,204.94
<b>INVESTMENTS WITH TRUSTEES</b> (See "Investments Under Management of Trustees," for details)	7,763,798.84	7,797,385.04	7,777,760.88
<b>TOTAL INVESTMENTS OF NOTE AND BOND PROCEEDS:</b>	<b>84,289,772.79</b>	<b>84,690,621.02</b>	<b>84,414,965.82</b>

TOTAL INVESTMENT PORTFOLIO:	PAR VALUE	FAIR VALUE	COST CARRIED
	<b>409,117,694.64</b>	<b>419,472,019.46</b>	<b>410,638,746.25</b>

### SIX MONTH LIQUIDITY PROJECTIONS

Estimated Cash Receipts For Next Six Months	463,848,076
Estimated Disbursements For Next Six Months	(434,647,090)
Estimated Net Cash Flow For Next Six Months***	29,200,986 (A1)
Contingency Cashflow Needs (based on potential State budget shortfall)	(30,000,000) (A2)
Securities Maturing	10,250,000 (B)
Local Agency Investment Fund / Cal Trust (includes TRAN)	94,907,922 (C)
Total Liquidity For Next Six Months	104,358,908 (A+B+C)
Estimated Cash Available For Long Term Investment	(10,000,000)
Remaining Available Liquidity	94,358,908
<b>Total Par Value of actively managed investments maturing in less than 12 months:</b>	<b>126,027,922</b>
<b>Total Par Value of actively managed investments maturing in more than 12 months:</b>	<b>198,800,000 ***</b>

\* Actual Weighted Average Maturity will be shorter, and actual dollar amount of investments maturing in less than 12 months will be higher than stated due to call features on investments  
 \*\* See page 5 for detailed list of investments  
 \*\*\* Includes TRAN (Tax and Revenue Anticipation Notes) receipts and disbursements

**BUTTE COUNTY TREASURER'S INVESTMENT REPORT**  
**INVESTMENT OF SCHOOL BOND PROCEEDS**  
**June 30, 2009**

BOND/NOTE DESCRIPTION	INVESTMENT TYPE	MATURITY DATE	DESCRIPTION	ANNUAL YIELD*	PAR VALUE	FAIR VALUE	COST CARRIED
<b>BONDS - LOCAL AGENCY INVESTMENT FUND (LAIF)</b>							
Chico Unified School District "A"				1.377%	5,140,607.13	5,150,012.04	5,140,607.13
Chico Unified School District "B"				1.377%	4,482,683.83	4,490,885.04	4,482,683.83
Chico Unified School District "B"	LAIF BOND FUND			1.377%	19,243,613.91	19,278,820.72	19,243,613.91
Paradise Unified School District "M"				1.377%	4,006,882.06	4,014,212.78	4,006,882.06
Oroville Union High School District "A"				1.377%	225,250.25	225,662.35	225,250.25
Oroville Union High School District "B"				1.377%	11,954,267.42	11,976,138.13	11,954,267.42
Butte/Glenn Comm College District "A"				1.377%	0.00	0.00	0.00
Butte/Glenn Comm College District "B"				1.377%	3,572,038.22	3,578,573.38	3,572,038.22
Butte/Glenn Comm College District "C"				1.377%	6,900,000.00	6,912,623.77	6,900,000.00
Butte/Glenn Comm College District "C"	LAIF BOND FUND			1.377%	11,000,000.00	11,020,124.85	11,000,000.00
Thermalito Union School District "M"				1.377%	43,338.78	43,418.07	43,338.78
SUBTOTAL					<b>66,568,681.60</b>	<b>66,690,471.13</b>	<b>66,568,681.60</b>
<b>BONDS - WELLS FARGO BANK</b>							
<b>WELLS FARGO BANK, TRUSTEE</b>							
<b>Chico Unified School District "A"</b>							
Account # 13061387	Money Market		Gov MM Mutual Fund	0.127%	5,753.91	5,753.91	5,753.91
	US Treas/Agency	8/03/2009	FHLB DN #313385JY3	3.098%	2,350,000.00	2,349,765.00	2,294,383.33
SUBTOTAL					<b>2,355,753.91</b>	<b>2,355,518.91</b>	<b>2,300,137.24</b>
<b>Chico Unified School District "B"</b>							
Account # 13061791	Money Market		Gov MM Mutual Fund	0.127%	52,756.02	52,756.02	52,756.02
	US Treas/Agency	2/15/11	FHLMC # 3128X6W85	1.710%	1,250,000.00	1,293,462.50	1,290,620.83
	US Treas/Agency	3/11/11	FHLB # 3133XPWW0	3.061%	2,000,000.00	2,073,120.00	2,018,551.11
	US Treas/Agency	3/16/11	FHLMC # 3128X8QH8	2.000%	2,500,000.00	2,515,375.00	2,500,000.00
	US Treas/Agency	4/25/11	FFCB # 31331XWU2	1.655%	1,750,000.00	1,863,750.00	1,857,675.72
SUBTOTAL					<b>7,552,756.02</b>	<b>7,798,463.52</b>	<b>7,719,603.68</b>
<b>Butte/Glenn Comm College District "B"</b>							
Account # 13061403	Money Market		Gov MM Mutual Fund	0.127%	48,782.42	48,782.42	48,782.42
SUBTOTAL					<b>48,782.42</b>	<b>48,782.42</b>	<b>48,782.42</b>
					<b>PAR VALUE</b>	<b>FAIR VALUE</b>	<b>COST CARRIED</b>
<b>GRAND TOTAL</b>					<b>76,525,973.95</b>	<b>76,893,235.98</b>	<b>76,637,204.94</b>

\* Yields quoted above are a snapshot per investment type. Actual yields earned on school bonds are calculated by the Treasurer's office and are a composite of investment earnings less Treasury costs.

**BUTTE COUNTY TREASURER'S INVESTMENT REPORT**  
**INVESTMENTS UNDER MANAGEMENT OF TRUSTEES**  
**June 30, 2009\***

LOAN PROGRAM	INVESTMENT TYPE	MATURITY DATE	DESCRIPTION	ANNUAL YIELD	PAR VALUE	FAIR VALUE	COST CARRIED
<b>2003 REFUNDING COP</b>							
<b>U.S. BANK, TRUSTEE</b>							
Expense Fund #94656106	Money Market		First Amer Treas Oblig Fund D	0.000%	17,921.31	17,921.31	17,921.31
Reserve Fund #94656101	Money Market		First Amer Treas Oblig Fund D	0.000%	36,631.76	36,631.76	36,631.76
	US Treas/Agency	10/18/13	FHLB #3133XSAE8	2.820%	385,000.00	398,113.10	398,962.04
Lease Payment #94656100	Money Market		First Amer Treas Oblig Fund D	0.000%	389,386.25	389,386.25	389,386.25
<b>SUBTOTAL</b>					<b>828,939.32</b>	<b>842,052.42</b>	<b>842,901.36</b>
<b>2004 PENSION OBLIGATION BONDS</b>							
<b>WELLS FARGO BANK, TRUSTEE</b>							
Series A Bond Fund # 16281106	Money Market		Gov MMF Service Fund #743	0.010%	8,696.73	8,696.73	8,696.73
Int. Rate Stabilization Fund # 16281109	Money Market		Gov MMF Service Fund #743	0.010%	1,716,152.84	1,716,152.84	1,716,152.84
	Pooled Agency Funds		Local Agency Investment Fund	1.377%	1,794,502.11	1,797,785.21	1,794,502.11
Series B Interest Fund #16281301	Money Market		Gov MMF Service Fund #743	0.010%	1,102,736.15	1,102,736.15	1,102,736.15
<b>SUBTOTAL</b>					<b>4,622,087.83</b>	<b>4,625,370.93</b>	<b>4,622,087.83</b>
<b>2004 WORKERS' COMPENSATION</b>							
<b>G B BRAGG &amp; ASSOC</b>							
<b>- Claims Administrators</b>							
Umpqua Bank #11205374	Commercial Bank		Business Interest Checking	0.200%	42,353.49	42,353.49	42,353.49
<b>SUBTOTAL</b>					<b>42,353.49</b>	<b>42,353.49</b>	<b>42,353.49</b>
<b>2006 COP - NEAL ROAD LANDFILL</b>							
<b>WELLS FARGO BANK, TRUSTEE</b>							
Certificate Reserve Fund #20550800	Money Market		Gov MMF Service Fund #743	0.010%	291,611.98	291,611.98	291,611.98
	US Treas/Agency	12/17/12	FHLB #3133XNMB2	4.250%	1,000,000.00	1,017,190.00	1,000,000.00
Base Rental Payment Fund #20550801	Money Market		Gov MMF Service Fund #743	0.010%	968,575.00	968,575.00	968,575.00
Expense Fund #20550802	Money Market		Gov MMF Service Fund #743	0.010%	10,231.22	10,231.22	10,231.22
<b>SUBTOTAL</b>					<b>2,270,418.20</b>	<b>2,287,608.20</b>	<b>2,270,418.20</b>
					<b>PAR</b>	<b>FAIR</b>	<b>COST</b>
					<b>VALUE</b>	<b>VALUE</b>	<b>CARRIED</b>
<b>GRAND TOTAL</b>					<b>7,763,798.84</b>	<b>7,797,385.04</b>	<b>7,777,760.88</b>

\* The date of this report reflects the date of the bank statements issued by the Trustees, whereas the date of the Investment Report reflects the last business day of the month.

**BUTTE COUNTY TREASURER'S INVESTMENT REPORT**  
**ACTIVELY MANAGED PORTFOLIO "AT-A-GLANCE"**  
**June 30, 2009**

**INVESTMENTS BY TYPE\***

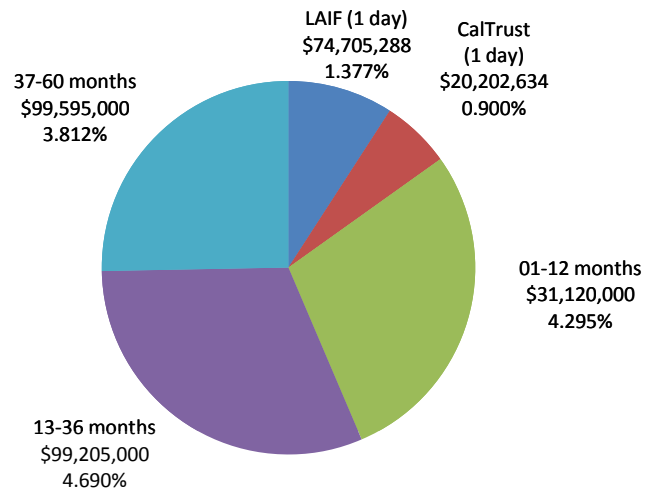
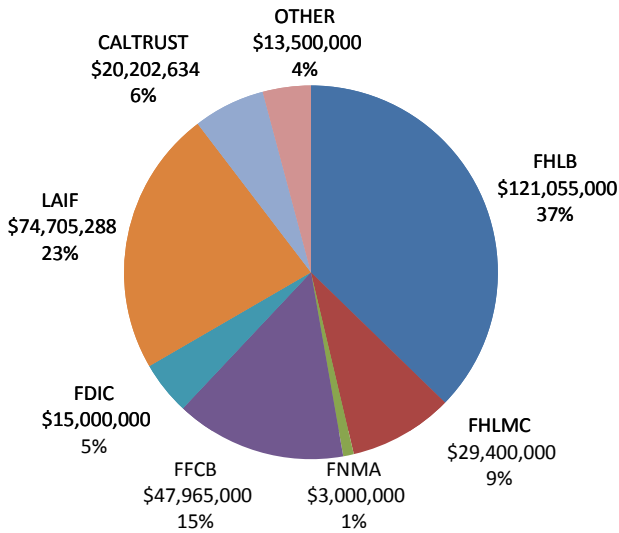
Federal Home Loan Bank	FHLB	\$ 121,055,000
Fed Home Loan Mortgage Corp	FHLMC	\$ 29,400,000
Fed National Mortgage Assn	FNMA	\$ 3,000,000
Federal Farm Credit Bank	FFCB	\$ 47,965,000
FDIC Medium Term Notes	FDIC	\$ 15,000,000
Local Agency Investment Fund	LAIF	\$ 74,705,288
CalTrust	CALTRUST	\$ 20,202,634
CD, TVA, FAMCA	OTHER	\$ 13,500,000
<b>TOTAL PAR VALUE</b>		<b>\$ 324,827,922</b>

**INVESTMENTS BY MATURITY & YIELD\***

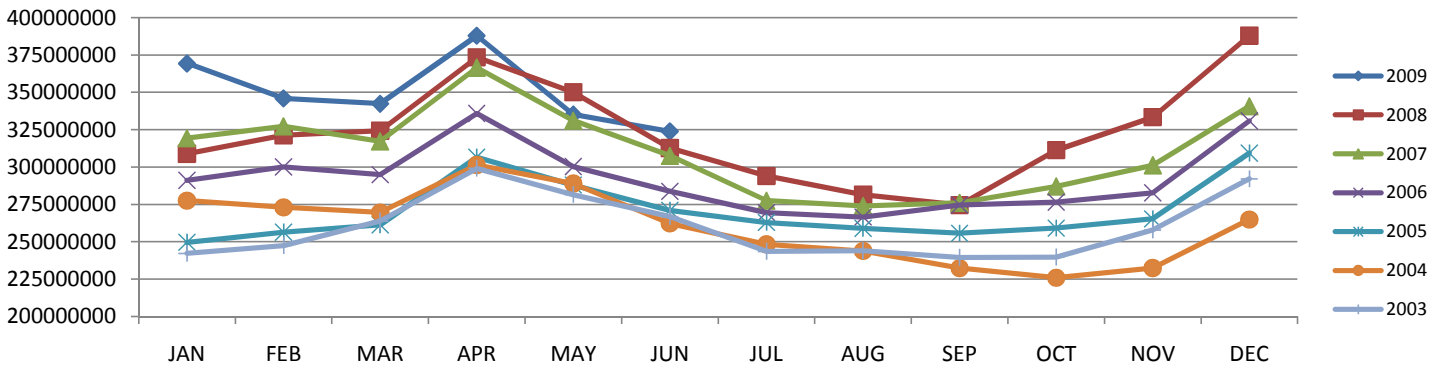
LAIF (1 day)	1.377%	\$ 74,705,288
CALTRUST (1 day)	0.900%	\$ 20,202,634
01-12 months	4.295%	\$31,120,000
13-36 months	4.690%	\$99,205,000
37-60 months	3.812%	\$99,595,000
<b>TOTAL PAR VALUE</b>		<b>\$ 324,827,922</b>

\* Investments managed by Trustees, School Bond & TRAN Proceeds not included.

Final maturity dates are used; probable call dates are not considered.



**Butte County Pooled Treasury Portfolio Balance\***  
**Net of Tax and Revenue Notes (TRAN) and Bond Proceeds**



\* This chart does not include deposits from TRAN, Bond Proceeds, or investments under management of Trustees and is intended to demonstrate cash flow trends and establish a baseline for the portfolio enabling medium term investments.



**BUTTE COUNTY TREASURER'S INVESTMENT REPORT**  
**MANAGED PORTFOLIO - DETAILS OF SECURITIES HELD**  
**June 30, 2009**

<u>Security</u>	<u>Description</u>	<u>Credit Rating</u>	<u>Purchase Date</u>	<u>Maturity Date</u>	<u>Yield to Maturity (%)</u>	<u>Par Value</u>	<u>Fair Value</u>	<u>Cost Carried *</u>
3128X1PN1	FEDERAL HOME LOAN MTG CORP	AAA	12/13/2004	7/9/2009	3.740	2,000,000.00	2,001,534.00	1,999,787.61
3128X3SL8	FEDERAL HOME LOAN MTG CORP	AAA	12/13/2004	7/30/2009	4.216	2,750,000.00	2,759,453.13	2,750,351.81
3128X3VA8	FEDERAL HOME LOAN MTG CORP	AAA	12/15/2004	9/1/2009	4.125	2,000,000.00	2,012,522.00	2,000,000.00
3128X3WY5	FEDERAL HOME LOAN MTG CORP	AAA	12/10/2004	9/22/2009	4.041	3,500,000.00	3,529,235.50	3,499,704.45
31331HE29	FEDERAL FARM CREDIT BANK	AAA	10/28/2005	2/9/2010	4.864	2,500,000.00	2,606,250.00	2,536,927.07
3128X34V2	FEDERAL HOME LOAN MTG CORP	AAA	6/17/2005	2/22/2010	4.347	3,000,000.00	3,068,913.00	2,998,099.33
3128X35R0	FEDERAL HOME LOAN MTG CORP	AAA	3/1/2005	3/1/2010	4.552	3,000,000.00	3,076,335.00	2,996,795.63
3134A33L8	FHLMC DEBENTURES	AAA	3/15/2005	3/15/2010	4.597	3,000,000.00	3,138,750.00	3,049,271.33
31331STD5	FEDERAL FARM CREDIT BANK	AAA	4/5/2005	4/5/2010	4.627	3,000,000.00	3,095,625.00	3,000,512.20
31331SZQ9	FEDERAL FARM CREDIT BANK	AAA	6/21/2005	6/10/2010	4.230	3,370,000.00	3,478,471.88	3,362,993.42
3133XBT8	FEDERAL HOME LOAN BANK	AAA	6/21/2005	6/11/2010	4.232	3,000,000.00	3,104,062.50	3,000,486.42
3133XCEQ2	FEDERAL HOME LOAN BANK	AAA	7/27/2005	7/13/2010	4.582	3,000,000.00	3,116,250.00	2,994,031.90
3128X4GL9	FEDERAL HOME LOAN MTG CORP	AAA	9/19/2005	8/4/2010	4.790	3,000,000.00	3,131,730.00	3,000,000.00
31331TBZ3	FEDERAL FARM CREDIT BANK	AAA	9/21/2005	8/27/2010	4.408	3,000,000.00	3,129,375.00	3,001,397.52
3133XCTV5	FEDERAL HOME LOAN BANK	AAA	10/11/2005	9/1/2010	5.000	3,000,000.00	3,150,000.00	3,000,000.00
3133XCUR2	FEDERAL HOME LOAN BANK	AAA	9/15/2005	9/10/2010	4.302	3,000,000.00	3,133,125.00	3,006,725.55
31315PAP4	FEDERAL AGRIC MTG CORP	AAA	10/13/2005	10/12/2010	4.680	3,000,000.00	3,147,483.00	2,997,941.94
31331VDJ2	FEDERAL FARM CREDIT BANK	AAA	10/21/2005	10/20/2010	4.673	3,000,000.00	3,152,812.50	3,000,978.63
31331VLW4	FEDERAL FARM CREDIT BANK	AAA	1/6/2006	12/23/2010	4.771	3,000,000.00	3,172,500.00	3,001,212.74
307692AA1	FARMER MAC GTD NOTES TR		6/2/2006	1/14/2011	5.470	2,000,000.00	2,084,080.00	1,984,028.88
3133MDBT9	FEDERAL HOME LOAN BANK	AAA	2/15/2006	2/15/2011	4.926	3,000,000.00	3,232,500.00	3,042,751.20
3128X2ZQ1	FEDERAL HOME LOAN MTG CORP	AAA	3/2/2006	2/24/2011	4.984	3,000,000.00	3,149,062.50	2,962,189.94
3133XENX3	FEDERAL HOME LOAN BANK	AAA	3/13/2006	3/11/2011	4.987	3,000,000.00	3,195,000.00	2,994,972.64
3133X7C69	FEDERAL HOME LOAN BANK	AAA	5/15/2006	5/13/2011	5.320	3,000,000.00	3,211,875.00	2,984,446.13
3136F67B9	FEDERAL NATL MORTGAGE ASSN	AAA	12/18/2006	6/14/2011	4.830	3,000,000.00	3,196,875.00	2,990,081.44
3128X1MB0	FHLMC STRUCTURED NOTE	AAA	10/26/2006	6/20/2011	5.102	1,150,000.00	1,232,955.25	1,147,973.80
31339YPU0	FHLB STEP-UP	AAA	12/14/2006	7/29/2011	4.836	1,000,000.00	1,076,250.00	1,003,104.31
3133MGYH3	FHLB CONSOL BOND	AAA	10/26/2006	5/15/2011	5.090	3,000,000.00	3,269,062.50	3,037,944.71
3133XF5T9	FEDERAL HOME LOAN BANK	AAA	10/2/2006	9/9/2011	4.933	3,000,000.00	3,210,937.50	3,003,991.01
3133XF5T9	FEDERAL HOME LOAN BANK	AAA	12/18/2006	9/9/2011	4.841	3,000,000.00	3,210,937.50	3,009,422.65
31331V5Y8	FEDERAL FARM CREDIT BANK	AAA	11/27/2006	10/3/2011	4.881	3,000,000.00	3,237,187.50	3,007,244.86
3134A1CV0	FEDERAL HOME LOAN MTG CORP	AAA	12/11/2006	10/24/2011	4.822	1,000,000.00	1,122,812.50	1,044,287.28
3133XHRK0	FEDERAL HOME LOAN BANK	AAA	1/25/2007	12/9/2011	5.084	3,000,000.00	3,219,375.00	2,978,615.64
64944QAA5	NEW YORK COMMUNITY BANK CORP	AAA	12/18/2008	12/16/2011	2.608	5,000,000.00	5,141,390.00	5,045,317.25
3133XSWM6	FEDERAL HOME LOAN BANK	AAA	1/23/2009	1/23/2012	2.100	5,000,000.00	5,051,562.50	5,000,000.00
31331XSFO	FEDERAL FARM CREDIT BANK	AAA	3/12/2007	3/12/2012	4.872	3,000,000.00	3,243,750.00	2,998,436.82
3133XKAL9	FEDERAL HOME LOAN BANK	AAA	3/21/2007	3/21/2012	5.007	2,555,000.00	2,579,751.56	2,554,565.30
31331XVH2	FEDERAL FARM CREDIT BANK	AAA	4/16/2007	4/12/2012	5.005	3,000,000.00	3,248,437.50	2,990,496.07
3133XKQS7	FEDERAL HOME LOAN BANK	AAA	5/7/2007	5/7/2012	5.050	3,000,000.00	3,109,687.50	3,000,000.00
880591DT6	TENN VALLEY AUTHORITY BD	AAA	5/23/2007	5/23/2012	4.851	3,000,000.00	3,388,785.00	3,147,606.80
3133XLEA7	FEDERAL HOME LOAN BANK	AAA	6/14/2007	6/8/2012	5.526	5,000,000.00	5,490,625.00	4,980,851.45
06050BAA9	BANK OF AMERICA CORP	AAA	12/8/2008	6/15/2012	3.022	10,000,000.00	10,312,860.00	10,028,048.62
3133XLMJ9	FEDERAL HOME LOAN BANK	AAA	11/16/2007	7/23/2012	4.270	2,500,000.00	2,625,000.00	2,532,491.73
31331S2T9	FEDERAL FARM CREDIT BANK	AAA	11/16/2007	8/10/2012	4.378	2,700,000.00	2,905,031.25	2,712,730.60
3128X4HF1	FEDERAL HOME LOAN MTG CORP	AAA	12/28/2007	8/15/2012	4.157	2,000,000.00	2,174,200.00	2,046,618.69
3133XL73	FEDERAL HOME LOAN BANK	AAA	11/16/2007	9/14/2012	4.348	2,500,000.00	2,714,843.75	2,545,824.78
3133XML66	FEDERAL HOME LOAN BANK	AAA	12/28/2007	10/10/2012	4.121	3,000,000.00	3,239,062.50	3,043,586.03
31331VPS9	FEDERAL FARM CREDIT BANK	AAA	12/4/2008	11/6/2012	2.914	5,000,000.00	5,418,750.00	5,279,972.39
31331YEB2	FEDERAL FARM CREDIT BANK	AAA	11/16/2007	11/16/2012	4.840	3,000,000.00	3,049,687.50	3,000,000.00
3133XSXC7	FEDERAL HOME LOAN BANK	AAA	2/13/2009	2/13/2013	3.000	5,000,000.00	4,996,875.00	5,000,000.00
3133XRFL9	FEDERAL HOME LOAN BANK	AAA	6/16/2008	6/14/2013	4.235	5,000,000.00	5,317,187.50	5,002,520.72
3133XRFL9	FEDERAL HOME LOAN BANK	AAA	7/17/2008	6/14/2013	4.105	5,000,000.00	5,317,187.50	5,024,603.65
3133XFLF1	FEDERAL HOME LOAN BANK	AAA	11/21/2008	6/14/2013	3.679	3,000,000.00	3,309,375.00	3,175,540.86
31331Y2Q2	FEDERAL FARM CREDIT BANK	AAA	7/17/2008	7/8/2013	4.054	3,000,000.00	3,208,125.00	3,020,359.80
3133XRSC5	FEDERAL HOME LOAN BANK	AAA	7/23/2008	7/23/2013	4.754	3,000,000.00	3,008,437.50	2,999,619.27
880591DW9	TENNESSEE VALLEY AUTHORITY	AAA	10/23/2008	8/1/2013	3.996	5,000,000.00	5,308,300.00	5,132,270.49
3133XPFV1	FHLB 4.02 08/13	AAA	11/21/2008	8/14/2013	3.874	2,000,000.00	2,108,750.00	2,010,362.71
3133XD6A4	FEDERAL HOME LOAN BANK	AAA	9/26/2008	9/13/2013	4.112	5,000,000.00	5,340,625.00	5,047,162.22
3133XD6A4	FEDERAL HOME LOAN BANK	AAA	10/23/2008	9/13/2013	4.113	3,000,000.00	3,204,375.00	3,028,143.82
31331GDP1	FEDERAL FARM CREDIT BANK	AAA	10/28/2008	10/28/2013	4.723	2,395,000.00	2,430,176.56	2,396,167.56
3133XSP93	FEDERAL HOME LOAN BANK	AAA	1/23/2009	12/13/2013	2.828	5,000,000.00	5,015,625.00	5,058,693.43
3133XSSD1	FEDERAL HOME LOAN BANK	AAA	12/30/2008	12/30/2013	3.000	5,000,000.00	4,957,812.50	5,000,000.00
3133XSRU4	FEDERAL HOME LOAN BANK	AAA	1/7/2009	1/7/2014	3.043	3,000,000.00	2,950,312.50	2,994,580.00
3133XSSM1	FEDERAL HOME LOAN BANK	AAA	1/13/2009	1/13/2014	3.150	3,000,000.00	2,989,687.50	3,000,000.00
3133XSWG9	FEDERAL HOME LOAN BANK	AAA	2/5/2009	2/5/2014	2.875	10,000,000.00	9,925,000.00	10,000,000.00
31331GMV8	FEDERAL FARM CREDIT BANK	AAA	2/12/2009	2/12/2014	3.240	5,000,000.00	5,028,125.00	5,000,000.00
3133XSZH4	FEDERAL HOME LOAN BANK	AAA	2/19/2009	2/19/2014	3.200	5,000,000.00	4,970,312.50	5,000,000.00
3133XT5W2	FEDERAL HOME LOAN BANK	AAA	2/24/2009	2/24/2014	3.261	1,500,000.00	1,503,750.00	1,499,302.92
<b>TOTAL</b>					<b>4.086%</b>	<b>229,420,000.00</b>	<b>239,236,800.88</b>	<b>230,684,146.01</b>

\*Source: US Bank Safekeeping (values may differ from Treasurer's Cost Carried due to accretion method variation)