

# Butte County



## Recycling E-Newsletter



[www.RecycleButte.net](http://www.RecycleButte.net)  
Your on-line Recycling Guide

### The Spring 2014 Butte County Recycling E-Newsletter has just blossomed!

♻️ Do you have an idea for a recycling subject? Or would you like to submit an article for this E-newsletter? Send in your ideas to: [recycle@buttecounty.net](mailto:recycle@buttecounty.net).

♻️ [National Prescription Drug Take Back Day](#) is April 26th. Home-generated prescriptions and over-the-counter drugs can be brought to one of four locations throughout the County on Saturday, April 26th. Locations that will accept these drugs are:

- Oroville Comp Care Clinic, 900 Oro Dam Blvd.
- Orchard Hospital, 284 Spruce St. (Gridley)
- Paradise Immediate Care, 5875 Clark Rd.
- Chico Enloe Medical Center, 560 Cohasset Rd

♻️ April 22<sup>nd</sup> is Earth Day. So was January 4<sup>th</sup>, February 20<sup>th</sup>, March 11<sup>th</sup> and every other day of the year.

*Steve Rodowick*

**Butte County Recycling Coordinator**



**Keep Butte County Butte-i-ful**



### Archives

To review past edition of the Recycling E-Newsletter, go to [www.RecycleButte.net](http://www.RecycleButte.net)

### **In this issue:**

- In the news – The new mattress recycling legislation**
  - What do you do with old... Video tapes**
  - County News – Carpet Recycling comes to Butte County**
  - Looking forward – The landfill of the future. Will they even exist?**
- 

### **In the News: Mattress recycling is now law.**

They pose one of the hardest to manage wastes for local governments. They are often illegally dumped and they harbor all kinds of creepy things when left on the side of the road. Mattresses have been giving landfills and local governments headaches for years. The new recycling program will be operated by an industry group, which will be financed by a still-to-be-determined fee paid by mattress buyers. The concept is similar to existing recycling practices for paint, tires and electronic waste.

Among other things, the act will require the retailer, by July 1, 2014, to give a consumer the option to have a used mattress picked up, at no additional cost, at the time a new mattress is delivered or be provided with an opportunity for free drop-off of the used mattress.

SB 254 had backing from the mattress industry, retailers and environmental organizations. The mattress recycling organization must submit a plan detailing the operations of the program to the Department of Resources Recycling and Recovery (CalRecycle) by July 1, 2015.

Here is the link to the full summary of [SB 254](#)

## What do you do with old Video Tapes?

Many old video tapes are classics that you dare not part with. Just like that classic vinyl Sargent Peppers album, you wouldn't let go of *Winnie the Pooh and Tigger too*. (Provided you still have a VCR) But the majority of old video cassettes are likely taking up space in a box in your garage. You will likely never watch the instruction video for your old treadmill again. The treadmill itself has likely been recycled years ago.

Now if you're expecting me to mention taking them to thrift shops or the library, forget it. They don't want them. The number of people who would actually purchase or check out old VHS tapes is quite limited.



So why can't we just toss them into the recycling bin? The outer cases of VHS, Betamax and audio cassette tapes are indeed plastic. (The covers that snap over the cassette) Those can be placed in the recycling bin. The cassette itself is a cheaper and less recyclable plastic. Some waste & recycling companies will take that plastic as well. It's best to call to see if they do. The inner tape is made of a phthalate-laden form of the plastic polyethylene, popularly referred to as Mylar, which is not recyclable. This tape should be removed and discarded.

## County news: Carpet Recycling comes to Butte County

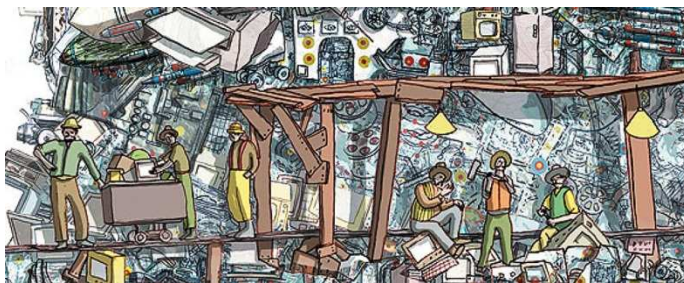


Carpet recycling is now a reality in Butte County. *Recology Butte-Colusa Counties* now accepts most carpet for recycling at their facility at 2270 S. 5<sup>th</sup> Avenue in Oroville. For carpet to be accepted for the program, it must be dry, no longer than 6 feet in length and rolled. The cost to recycle carpet will be \$35 per ton, significantly less than it would cost to dispose at a landfill. For regular carpet installers and large institutions replacing their carpet, this will amount to a big savings as well as reducing the waste to the landfill.

## Looking Forward – The Landfill of the future, will they even exist?

Landfills and the way they operate are changing rapidly. It was only a few decades ago when the common practice was to pile up the days trash as set it ablaze. Fortunately for us all, this method of managing our waste is no longer used. Today's practice of compacting the waste and covering daily, within lined cells to protect groundwater, is the most common way to manage our waste. Even with these environmental controls, the era of just burying trash is generally considered to be on the way out.

What we continue to place in the ground has value. And many of the materials we buried for the past several decades, materials that were once cheap and abundant, are now highly valued and getting increasingly hard to acquire.



Landfill mining is not a new concept; and it goes way beyond the surface scavenging that we see in pictures from third-world countries. Given their limited land space and growing population, Israel started to mine landfills back in the 1950's. Depending on the nature of the material buried, some landfills would be best left covered up. However landfills with high levels of organic material, or other recoverable materials of value, could be mined for recovery.

Other ways to manage waste beyond burying it would be to segregate the organic material and manage it through a process called *Anaerobic digestion*. This is where the green matter decomposes without oxygen, thereby producing methane gas which would be captured and combusted to produce electricity. The remaining decomposed material can be used as a nutrient rich soil amendment that could be applied to local farms.

Other new technologies are emerging that could continue to reshape the waste management landscape, including *plasma gasification*. However this process is still evolving and currently too expensive to institute on a local level.

However, the best way to manage waste is still the old way; generate as little as possible.

## Recycling Road Show

Would your club, classroom or organization like a presentation about current trends in recycling and waste management? Our staff will speak at your school or function about local recycling and waste issues and be happy to answer questions about local and national waste trends. Call 879-2352.

## **Coming in the Summer 2014 Issue:**

### **Special Vacation Time edition**

**A look at how a faraway tropical island recycles and the special challenges businesses and residents face.**



Questions, comments, suggestions? Email us at [recycle@buttecounty.net](mailto:recycle@buttecounty.net). We will try to respond as soon as possible.



*The trees are hoping your printer jams. Please don't print this newsletter.*