

# Butte County Federal/State Land Use Coordinating Committee

April 5, 2021 11:00 – 12:00 AM Via Zoom

## Meeting Minutes

1) **Self-Introductions:** Josh Pack, Paula Daneluk, Paul Gosselin, Peggy Moak (committee members)

**Attendees:** Calli-Jane DeAnda and Taylor Nilsson (Butte County Fire Safe Council); Wolfy Rougle (BCRCD); Holly Jorgensen (Sacramento River Watershed); John Messina (Butte County Fire); Brian Ring (BC Administration); Jennifer Macarthy (BC DCAO Economic Development); Danielle Nuzum (Deputy Chief Administrative Officer); Kelly Peterson (BC Water & Resource Conservation)

2) The Minutes for March 22, 2021 were approved (M-Daneluk, 2<sup>nd</sup> Pack, approved 4-0)

3) Discussion Item: \$200,000 SNC Grant Concept Proposal from Chico State Enterprises to develop a fire resiliency projects curriculum and certificate program at Shasta and Feather River Community Colleges to build local capacity for employment in this field in rural areas. The grant will also include development of a fire resiliency plan for a shovel-ready project. Timing for the grant project is October 2021 with curriculum rollout Spring/Summer of 2022.

4) Bureau of Land Management Northern CA Integrated Resource Management Plan:

- a. An update of status of the MOU between the BLM and Butte County, Cooperating Agency was provided by Josh Pack. A couple of changes to include “reasonable time frames” for document review and comment, as well as caveating participation “to the fullest extent possible” to protect the interests of the County were requested, and approved, by the BLM. The MOU is slated for Board action at their April 27 meeting.
- b. Given the tight turnaround in the month of April for review of the Analysis of Management Strategy (AMS) and apparent process, the Committee discussed the merits of re-sending the Coordinating Committee’s 2018 letter to the BLM during the April comment period. MOTION: Peggy Moak is authorized to develop comments on the AMS to be sent to the Committee for review prior to forwarding to the BLM, and re-draft the 2018 letter to a more current version if deemed appropriate once the AMS review was complete. M-Daneluk, 2<sup>nd</sup> Gosselin, approved 4-0 **Update: The AMS addresses several of the concerns of the County from the Committee’s 2018 letter; therefore, it does not seem necessary to re-send those requests at this time.**

5) PUBLIC COMMENT: (THE COMMITTEE IS PROHIBITED BY STATE LAW FROM TAKING ACTION ON ANY ITEM PRESENTED IF IT IS NOT LISTED ON THE AGENDA.)

## **7) Butte County TASK FORCE Minutes:**

7.01 Consider a name change to more accurately reflect the mission of the Task Force. MOTION: Change the name to **Butte County Wildfire Safety Task Force**. This was accepted unanimously.

7.02 Wolfy Rougle: Introduction to the BCRCD “Butte Forested Watersheds Plan” (a deliverable of the Watershed Coordinator grant and a complement to the WUI Program of Work discussed at the last meeting, outline below:

### **Butte Watersheds Forest Health Plan: Proposed Outline**

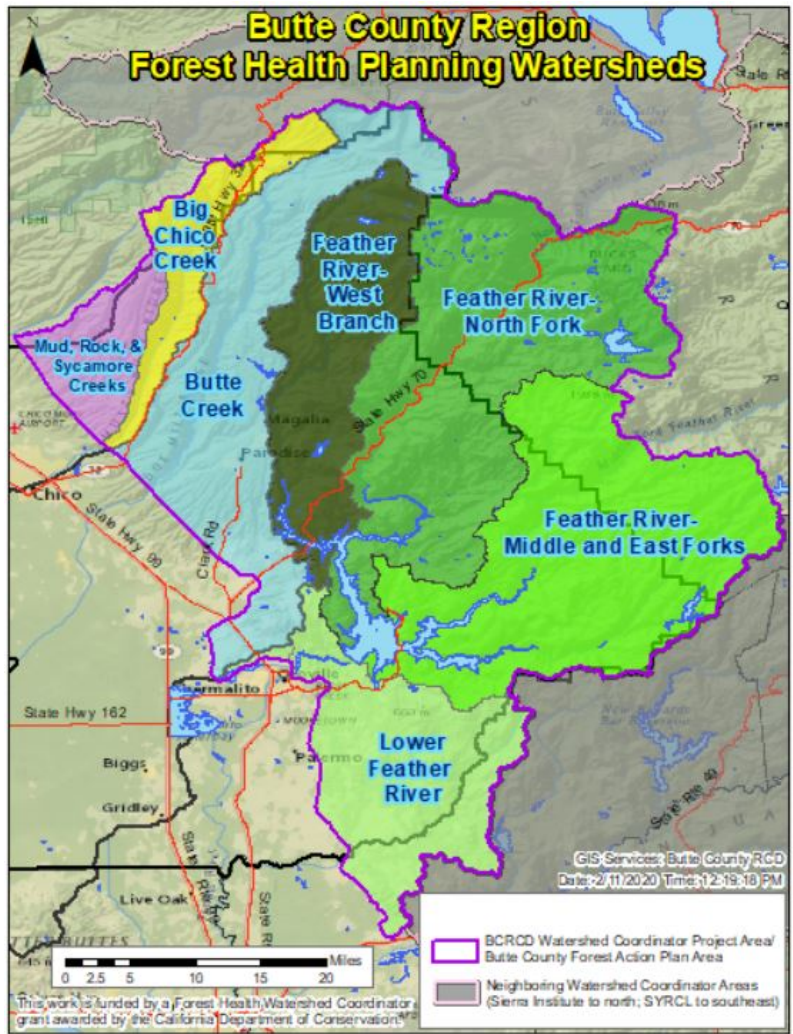
**Mission:** Support Butte County region implementation of the California Forest Carbon Plan.

**Goal:** Create a well-researched and well-accepted watershed improvement plan by defining and prioritizing regional forest health projects that meet the needs of all stakeholders (or, at least, provide something for everyone!).

**Objectives:**

1. Define desired (range of) conditions across the 900,000-acre project area (see map below), with the understanding that future climate and fire regime will be different from today's
2. Support BCFC's/ Task Force's WUI Program of Work by discussing in detail the assumptions on which it was based and by extending the concept of programmatic planning across upper watershed areas as well as the WUI.
3. Describe the magnitude (pace and scale) of ongoing investment that would actually be needed (even if that level is "unrealistic") to restore and permanently care for our forests
4. List some as-yet-unfunded projects that would restore and maintain high-priority areas

**Audience:** CA Dept of Conservation, other State funding agencies, Regional Fire and Forest Capacity-Building (RFFCB) block grantees, regional land managers, elected representatives. Plan should be engaging and inspiring to the public (preferred format = story map incorporating super short videos that soar through spacious, resilient forests) but broadly engaging the public is not the primary goal of this document.



## Outline:

### 1.) Introduction: Fire History of Butte Forested Watersheds

This short section is a 2021 snapshot, identifying and comparing

- acres that have burned too often or too intensely;
- acres that are at high risk because they have not burned in a long time; and
- acres that are doing well/within their normal fire regime. Describes values at risk from inaction (primarily from an ecological/water/carbon storage perspective).

### 2.) Rightful Fire Return Intervals for Butte Watersheds Region

How often should our various landscapes actually be burning? Synthesized from following sources: Tribal consultation, scientific literature, and USFS FRID geodata

### 3.) Desired Conditions

What should our various landscapes actually look like if they were healthy and resilient? Integrates understanding from recent regional efforts such as the Camp Fire Forest Management Plan, City of Chico VFMP, Concow Resilience Project, Butte Forest Handbook, Feather River Ranger District projects, tribal consultation and partner review, as well as CA Forest Carbon Plan.

### 4.) Program of Work; Costs and Benefits

Estimates the actual pace and scale of work that would need to be done to restore and maintain healthy forests at resilient density.

- Examples of what “pace and scale” means: how many acres of prescribed fire or wildfire per year; labor-years for hand-cutting crews; biomass removal estimates.
- Estimates the cost of investment needed
- Estimates the benefits (e.g. from carbon storage) that would be generated.

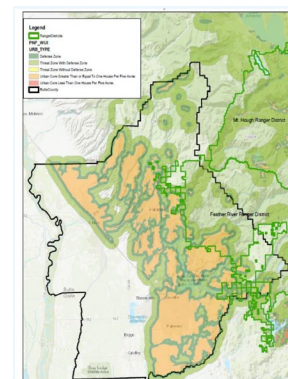
### 5.) Some Representative Projects

Lists some larger projects (500-20,000 acre scale) that support the goals of increased capacity and forest resilience. Serves as an inventory of unmet needs and a potential pipeline of projects local organizations can seek funding for and implement.

## 7.03 Standing Agenda Items: see discussion items below, submitted by the Butte County Fire Safe Council

### Butte County Task Force

### Standing Agenda Topics



### *Role of the Task Force*

*To guide, provide input and assist in creating wildfire safety at a County wide scale with a variety of tactics.*

## Discussion Topics

1. WUI Pre and Post Program of Work (Action Plan)  
\*Featured Community: **Berry Creek**
2. Butte County Collaborative Group – Roles and Partners
3. Community Wildfire Protection Plan - Project Updates and Timelines
4. Shovel Ready Projects - CEQA and Governor's Budget
5. Paradise Forest Management Plan
6. Cohasset Forest Management Plan
7. Forest Health Handbook – in draft form currently, final review pending prior to publication

## Funding Opportunities

- Landscape Scale Restoration Grant Funding (LSR)
- California Fire Safe Council – Defensible Space Grant
- Stewardship Contract
- Cal Fire CCI Grants – Ideas to consider:

### County Wide Programs:

- Youth Outreach Education
- Chipper Program
- Special Needs D Space Grant county wide to add on to CFSC – Incorporate crews in grant
- County Wide? Biomass Chipping – based on cogen availability
- Biomass Facility Support
- Support to VMP needs of CAL FIRE
- Prescribed Fire with Plumas RX Cooperative
- Job Training for Fuels Reduction with Oroville Adult School
- Wildfire Recovery – fire scar of North Complex/Camp Fire- tree removal and brush thinning
  - Berry Creek Wildfire Recovery
  - Feather Falls Wildfire Recovery

### Community Needs:

- Town of Paradise- Grazing/ Defensible Space and Weed abatement
- Forest Ranch Expansion & Evacuation Safety Expansion
- Cohasset Fuels Reduction & Evacuation Safety Expansion
- Forbestown Fuels Reduction & Evacuation Safety Expansion
- Upper Ridge Fuels Reduction & Evacuation Safety

Wildland Urban Interface Areas	
<b>1. Recovery</b>	<b>2. Protection</b>
<b>Paradise</b>	Cohasset
<b>Magalia</b>	Clipper Mills
<b>Concow</b>	Forest Ranch
<b>Yankee Hill</b>	Butte Meadows/Jonesville
<b>Berry Creek</b>	Forbestown
<b>Feather Falls</b>	Kelly Ridge
<b>Bangor</b>	
<b>Butte Creek Canyon</b>	